

**MARYLAND
JUDICIARY
STATISTICAL ABSTRACT 2017**

TABLE OF CONTENTS

Message from Chief Judge Barbera	3
The Maryland Judicial System Organizational Chart	4
Maryland Judiciary At a Glance.	5

• The Court of Appeals

Narrative.	7
Table CA-1: Appeals and Petitions for Certiorari Filed and Disposed	8
Table CA-2: Regular Docket Appeals Docketed by Term	8
Table CA-3: Filings and Dispositions.	8
Table CA-4: Regular Docket Disposition Type and Origin of Appeals	9
Table CA-5: Petition Docket Dispositions	9

• The Court of Special Appeals

Narrative	10
Table COSA-1: Appeals Filed and Disposed and Opinions Filed	10
Table COSA-2: Appeals Docketed by Term.	10
Table COSA-3: Disposition of Applications for Leave to Appeal and Other Misc. Cases	11
Table COSA-4: Disposition and Origin of Cases, Regular Docket	12

• The Circuit Courts

Narrative.	13
Table CC-1.1: All Cases: Filings and Terminations, by Jurisdiction.	14
Table CC-1.2: All Cases: Statewide Filings and Terminations, by Case Type	15
Table CC-2.1: Small Jurisdictions: Categories of Filings	16
Table CC-2.2: Medium Jurisdictions: Categories of Filings	18
Table CC-2.3: Medium-Large Jurisdictions: Categories of Filings	20
Table CC-2.4: Large Jurisdictions: Categories of Filings	22
Table CC-3.1: Small Jurisdictions: Categories of Terminations	23
Table CC-3.2: Medium Jurisdictions: Categories of Terminations	25
Table CC-3.3: Medium-Large Jurisdictions: Categories of Terminations.	27

Table CC-3.4: Large Jurisdictions: Categories of Terminations	29
Table CC-4: Civil-General Filings and Terminations	30
Table CC-5: Civil-Family Filings and Terminations	31
Table CC-6: Domestic Violence Protective Order Dispositions	32
Table CC-7: Criminal Filings and Terminations	33
Table CC-8: Juvenile Filings and Terminations	34
Table CC-9: Business-Related Workload	35

• The District Court

Narrative	36
Table DC-1: Motor Vehicle, Criminal and Civil Cases Filed and Terminated	37
Table DC-2: Motor Vehicle, Criminal and Civil Cases Filed and Terminated, by Type	38
Table DC-3: Motor Vehicle Cases Filed and Processed	39
Table DC-4: Criminal Cases: Manner of Disposition	40
Table DC-5: DWI Cases Filed and Terminated	41
Table DC-6: DWI Cases: Manner of Disposition	42
Table DC-7: Domestic Violence Cases Filed and Terminated	43
Table DC-8: Peace Order Cases Filed and Terminated	44
Table DC-9: Domestic Violence Dispositions	45
Table DC-10: Peace Order Dispositions	46

NOTE: Due to the transition to a new case management system, data may not be comparable across counties and across years. The following courts transitioned to the new case management system: Anne Arundel (FY 2015 and FY 2016); Cecil, Kent, Queen Anne’s, Talbot, Caroline, Dorchester, Wicomico, Somerset, Worcester, Calvert, Charles, and St. Mary’s (FY 2017). The Court of Special Appeals rolling transition coincides with the trial court.

PREPARED BY:

Maryland Judiciary
 Court Operations Department
 Administrative Office of the Courts
 2001 E/F Commerce Park Dr.
 Annapolis, Maryland 21401
 (410) 260-1737
 Maryland Relay Service (TT/Voice) 1-800-735-2258
 Available online at mdcourts.gov



MESSAGE FROM CHIEF JUDGE MARY ELLEN BARBERA

I am pleased to present the **Maryland Judiciary's Annual Statistical Abstract for Fiscal Year 2017**.

This report, which is a compilation of trial and appellate court caseload data, offers valuable information about case management, the volume of cases handled by the courts, and the disposition of that caseload. Each case signifies a problem to be resolved; the data in this report reflect our daily efforts on behalf of the people of Maryland to provide fair, efficient, and effective justice.

I thank the judges, magistrates, clerks, case managers, administrative support staff, and others whose work is at the core of this report. These hard-working professionals, whether on the bench, behind the counter, or behind the scenes, work tirelessly to ensure that the Judiciary processes and adjudicates cases to achieve timely justice. I am grateful to all for their dedication.

We continue to improve our systems and processes to support our courts in providing excellent customer service, prompt, efficient, and just resolution of cases, increased transparency, and enhanced access to data, records, and information. Whether it is the implementation of Maryland Electronic Courts (MDEC), case time standards in both the trial and appellate courts, or initiatives designed to ensure equal access to justice for all Marylanders, the Maryland Judiciary is committed to remaining on the forefront of innovation in order to provide the best possible service to all those with business before the courts.

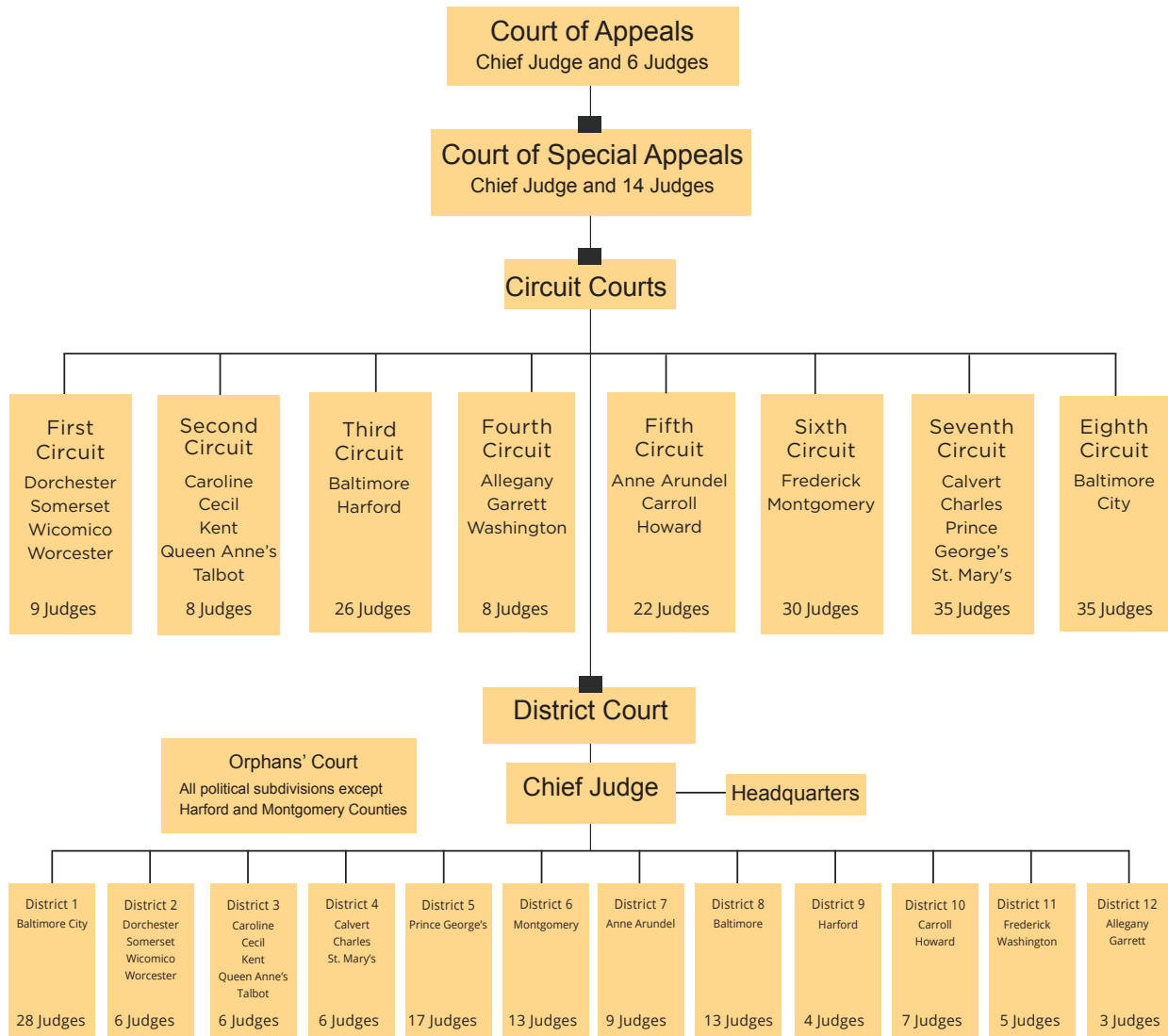
Sincerely,

A handwritten signature in black ink that reads "Mary Ellen Barbera". The signature is written in a cursive, flowing style.

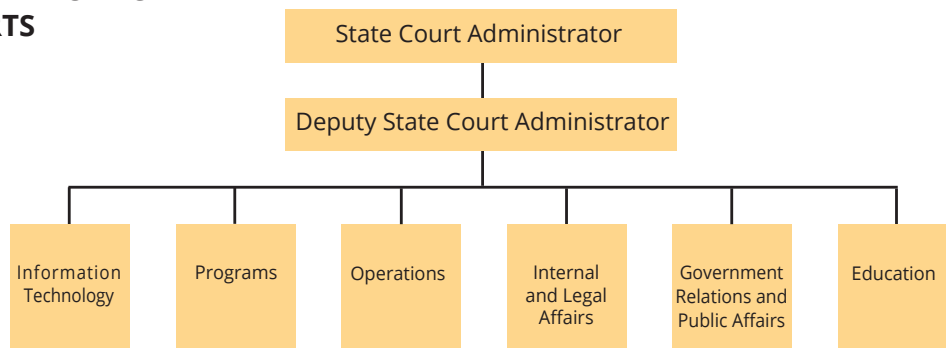
Mary Ellen Barbera
Chief Judge
Maryland Court of Appeals



MARYLAND JUDICIAL SYSTEM



ADMINISTRATIVE OFFICE OF THE COURTS



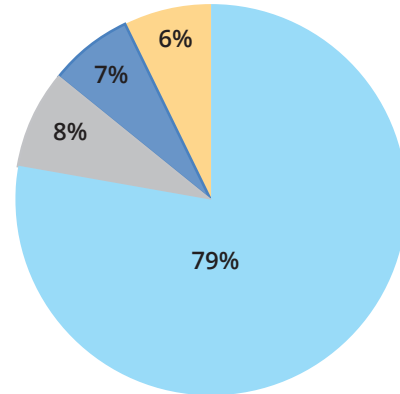
The Administrative Office of the Courts (AOC) is the central support agency for the state judicial branch, and provides a broad range of support services to Maryland's courts in operations, information technology, management, legal, government relations, financial, administration, and programs.

MARYLAND JUDICIARY AT A GLANCE

FY 2017 Personnel Profile

JUDGES	
Court of Appeals	7
Court of Special Appeals	15
Circuit Court	173
District Court	118
Total Judges	313
MAGISTRATES AND LAW CLERKS	
Circuit Court Magistrates ¹	73
Law Clerks	180
Total Magistrates and Law Clerks	253
JUDICIAL SUPPORT PERSONNEL	
<i>State Funded Positions</i>	
Court of Appeals	37.00
Court of Special Appeals	90.50
Circuit Court Clerks' Offices	1,443.00
District Court	1,404.50
Administrative Office of the Courts	375.75
Judicial Units ²	33.75
Total Judicial Support Personnel ³	3,384.50
Judicial Support Contractual Employees	334.00
Total State Funded Judicial Branch Personnel	4,284.50
<i>Locally Funded Positions</i>	
Orphans Court Judges ⁴	66
Circuit Court Personnel	966.92
Total Locally Funded Judges and Personnel	1,032.92

State-Funded Positions



- Judges
- Judicial Support Personnel
- Magistrates and Law Clerks
- Judicial Support Contractual Employees

1. Includes one contractual Magistrate.
2. Judicial Units include the Commission on Judicial Disabilities, Rules Committee, State Board of Law Examiners, and State Law Library. The Attorney Grievance Commission and Client Protection Fund are also units of the Judiciary; however, they are staffed through those entities.
3. Excludes Judicial Support Contractual Employees.
4. Three judges sit on the Orphans' Court in Baltimore City and each of the counties. Circuit Court judges sit as judges of the Orphans' Court in Harford and Montgomery counties.

FY 2017 Judicial Revenues and Expenditures

Revenues	\$519,133,919
Expenditures	\$536,880,859

FY 2017 Total Filings and Terminations¹

COURT	TOTAL FILINGS	TOTAL TERMINATIONS
Court of Appeals	871	877
Court of Special Appeals	1,931	2,052
Circuit Courts	239,134	231,083
District Court	1,646,877	1,796,622
TOTALS	1,888,813	2,030,634

1. Due to the transition to Maryland Electronic Courts (MDEC), data on filings and terminations are obtained from multiple source systems, which may result in some differences in the comparability of data across jurisdictions and between reporting periods.

FY 2017 Judicial Revenues¹

PROGRAM	
Court of Appeals	\$103,378
Court of Special Appeals	94,058
Circuit Court	421,128,551
District Court	90,781,372
Circuit Court Judges ²	1,170,135
Administrative Office of the Courts ³	4,996,552
Judicial Units	854,910
Maryland State Law Library	4,953
TOTALS	\$519,133,919

FY 2017 Judicial Expenditures¹

PROGRAM	
Court of Appeals	\$12,107,068
Court of Special Appeals	12,406,821
Circuit Court	110,483,947
District Court	183,807,442
Circuit Court Judges ²	69,630,240
Administrative Office of the Courts ³	79,326,532
Judicial Units	2,750,986
Maryland State Law Library	3,214,757
Judicial Information Systems	52,442,209
Major Information Technology Projects	10,710,857
TOTALS	\$536,880,859

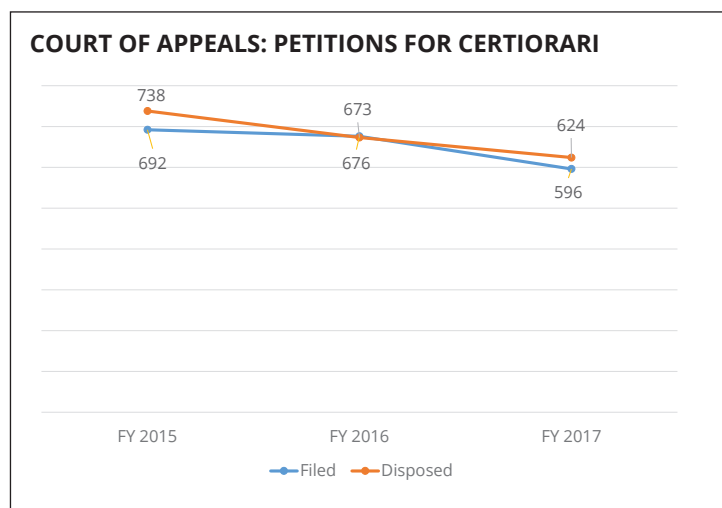
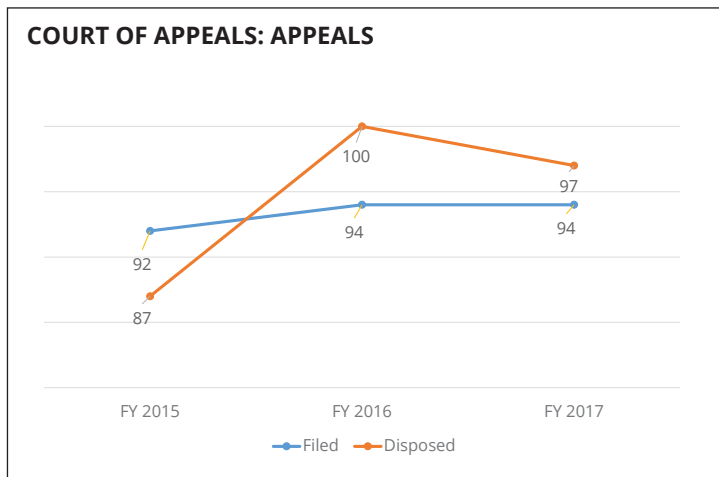
1. Revenues and expenditures include all fund types.
2. Category includes revenues and expenditures associated with child support reimbursements for magistrates.
3. Effective FY 2016, Family Law is included in the Administrative Office of the Courts program budget.

COURT OF APPEALS

The Court of Appeals was created by the Constitution of 1776 and is the highest court in Maryland. Cases heard by the seven judges of the Court are, for the most part, selected through a discretionary review process. Petitions for certiorari come to the Court either before or after a case has been decided by the Court of Special Appeals. For most cases, the Court grants those petitions for certiorari it deems to be desirable and in the public interest.

The Court of Appeals also adopts rules of judicial administration, practice, and procedure; admits persons to the practice of law; answers certified questions of law; and conducts disciplinary proceedings involving members of the bench and bar.

The following tables provide a statistical depiction of the Court's workload for Fiscal Year 2017.



**TABLE CA-1 COURT OF APPEALS
APPEALS AND PETITIONS FOR CERTIORARI
FILED AND DISPOSED WITHIN FISCAL YEAR
3 Year Comparative Tables
Fiscal Years 2015 - 2017**

	APPEALS			CERTIORARI	
	Filed	Disposed		Filed	Disposed
FY 2015	92	87	FY 2015	692	738
FY 2016	94	100	FY 2016	676	673
FY 2017	94	97	FY 2017	596	624

**TABLE CA-2 COURT OF APPEALS
REGULAR DOCKET APPEALS DOCKETED BY TERM
2014 - 2016 Terms***

	CIVIL	CRIMINAL	TOTALS
2014 Term	40	53	93
2015 Term	64	43	107
2016 Term	57	41	98

* The number of appeals docketed are counted by term.
(September 1, 2016 – August 31, 2017 is the 2016 Term.)

**TABLE CA-3 COURT OF APPEALS
FILINGS AND DISPOSITIONS
Fiscal Years 2015-2017**

	FY 2015 FILINGS	FY 2015 DISPOSITIONS	FY 2016 FILINGS	FY 2016 DISPOSITIONS	FY 2017 FILINGS	FY 2017 DISPOSITIONS
Regular Docket	92	87	94	100	94	97
Petitions for Certiorari	692	738	676	673	596	624
Attorney Grievance Proceedings	114	133	94	100	126	106
Bar Admission Character Matters	2	4	3	2	4	4
Certified Questions of Law	3	4	6	7	3	1
Miscellaneous Appeals	46	45	49	48	48	45
TOTALS	949	1011	922	930	871	877

**TABLE CA-4
COURT OF APPEALS
REGULAR DOCKET
DISPOSITION TYPE AND ORIGIN OF APPEALS
Fiscal Year 2017**

DISPOSITION TYPE	CIVIL	JUVENILE	CRIMINAL	TOTALS
Affirmed	32	1	28	61
Reversed	10	0	4	14
Dismissed - Opinion Filed	2	0	3	5
Dismissed Without Opinion	0	0	0	0
Vacated and Remanded	6	0	3	9
Reversed and Remanded	6	0	2	8
Affirmed in Part, Reversed in Part	0	0	0	0
Affirmed in Part, Vacated in Part	0	0	0	0
Dismissed Prior to Argument or Submission	0	0	0	0
Transfer	0	0	0	0
TOTAL CASES DISPOSED FY 2017	56	1	40	97
Origin	Civil	Juvenile	Criminal	TOTALS
2014 Docket	1	0	0	1
2015 Docket	17	0	13	30
2016 Docket	38	1	27	66
TOTAL CASES DISPOSED FY 2017	56	1	40	97

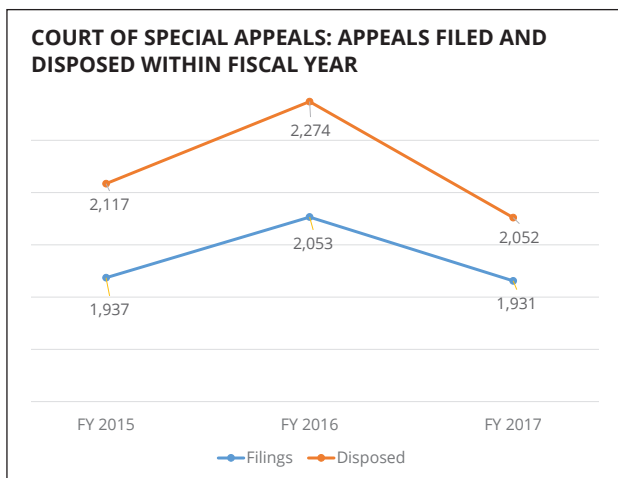
**TABLE CA-5 COURT OF APPEALS
PETITION DOCKET DISPOSITIONS
(PETITIONS FOR CERTIORARI)
Fiscal Years 2015-2017**

PETITIONS	GRANTED	DISMISSED	DENIED	WITHDRAWN	TOTALS	PERCENTAGE OF CERT. PETITIONS GRANTED
<i>Civil</i>						
FY 2015	53	5	312	0	370	14.3%
FY 2016	51	6	283	5	345	14.8%
FY 2017	50	16	226	2	294	17.0%
PETITIONS	GRANTED	DISMISSED	DENIED	WITHDRAWN	TOTALS	PERCENTAGE OF CERT. PETITIONS GRANTED
<i>Criminal</i>						
FY 2015	34	2	332	0	368	9.2%
FY 2016	34	17	271	2	324	10.5%
FY 2017	36	26	265	3	330	10.9%

COURT OF SPECIAL APPEALS

The Court of Special Appeals was created in 1966. Cases heard by the Court include any reviewable judgment, decree, or order of other action of a circuit court. The Court also considers applications for leave to appeal in such cases as post conviction, habeas corpus matters involving denial of or excessive bail, inmate grievances, appeals from criminal guilty pleas, and violations of probation.

The Court includes 15 judges — one judge from each of the seven appellate judicial circuits and eight from the State at large. The judges are empowered to sit in panels of three. All judges may sit “en banc” to hear a case if the majority of the judges so order. The following tables provide statistics on the Court’s workload for Fiscal Year 2017.



**TABLE COSA-1 COURT OF SPECIAL APPEALS
APPEALS FILED AND DISPOSED AND OPINIONS FILED WITHIN FISCAL YEAR
Fiscal Years 2015-2017**

	APPEALS FILED	DISPOSED	OPINIONS FILED
FY 2015	1,937	2,117	1,583
FY 2016	2,053	2,274	1,390
FY 2017	1,931	2,052	1,341

**TABLE COSA-2 COURT OF SPECIAL APPEALS
APPEALS DOCKETED BY TERM
2014, 2015, 2016 TERMS***

	CIVIL APPEALS	CRIMINAL APPEALS	TOTALS
2014 Term	1,190	716	1,906
2015 Term	1,248	828	2,076
2016 Term	1,157	787	1,944

* The number of appeals docketed are counted by term. (March 1, 2016 - February 29, 2017 is the 2016 Term.)

**TABLE COSA-3 COURT OF SPECIAL APPEALS
DISPOSITION OF APPLICATIONS FOR LEAVE TO APPEAL
AND OTHER MISCELLANEOUS CASES
Fiscal Years 2015- 2017**

	FY 2015	FY 2016	FY 2017
POST CONVICTION-TOTALS	148	278	246
Granted	0	1	0
Dismissed or Transferred	4	29	29
Denied	137	221	193
Remanded	7	25	23
Stayed	0	2	1
GUILTY PLEA-TOTALS	58	60	29
Granted	2	0	0
Dismissed or Transferred	7	4	3
Denied	47	56	26
Remanded	2	0	0
OTHER MISCELLANEOUS-TOTALS	44	51	57
Granted	0	0	0
Dismissed or Transferred	3	8	14
Denied	40	42	43
Remanded	1	1	0
VIOLATIONS OF PROBATION-TOTALS	40	53	32
Granted	2	0	0
Dismissed or Transferred	4	10	6
Denied	33	43	24
Remanded	1	0	2
TOTALS	290	442	364

**TABLE COSA-4 COURT OF SPECIAL APPEALS
DISPOSITION AND ORIGIN OF CASES
Regular Docket
Fiscal Year 2017**

DECISION	CIVIL	JUVENILE	CRIMINAL	TOTALS
Affirmed (incl. modified and affirmed)	401	67	493	961
Reversed (incl. reversed, reversed/remanded)	73	5	54	132
Dismissed - Opinion Filed	37	2	23	62
Remanded without Affirmance or Reversal	10	2	6	18
Vacated, Vacated and Remanded	38	7	27	72
Affirmed in Part, Reversed in Part	0	0	0	0
Affirmed in Part, Vacated in Part	23	2	32	57
Affirmed in Part (incl. affirmed and remanded)	23	1	13	37
Dismissed Prior to Argument or Submission	416	64	186	666
Transferred to Court of Appeals	9	0	2	11
Other	19	3	14	36
TOTAL CASES DISPOSED FY 2017	1,049	153	850	2,052
ORIGIN	CIVIL	JUVENILE	CRIMINAL	TOTALS
Unspecified Docket *	31	5	15	51
2007 Docket	1	0	1	2
2010 Docket	2	0	1	3
2011 Docket	1	0	0	1
2012 Docket	2	0	4	6
2013 Docket	15	0	7	22
2014 Docket	60	4	42	106
2015 Docket	328	29	339	696
2016 Docket	562	110	415	1,087
2017 Docket	47	5	26	78
ORIGIN TOTALS	1,049	153	850	2,052

* 51 Cases disposed in FY 2017 could not be attributed to a specific docket of origin.

CIRCUIT COURTS

In Maryland, each county and Baltimore City has a circuit court. Circuit courts are the trial courts of general jurisdiction and are the only courts empowered to hold jury trials. The 162 judges handle major civil cases, serious criminal matters, and all family matters including juvenile. Circuit court judges also decide appeals from the District Court and certain administrative agencies. Judicial magistrates primarily hear family and juvenile matters and make recommendations based on their findings to the judge.

In addition to judicial functions, the courts are responsible for recording the State's land record transactions, as well as issuing a number of business licenses. Civil marriage ceremonies are often performed by judges and clerks, and the clerks of court also issue marriage licenses.

Circuit courts are grouped into eight geographical circuits, each with two or more counties, with the exception of the Eighth Circuit that consists of Baltimore City. The smallest jurisdictions have one judge. Baltimore City, which handles the largest number of cases, has 35 judgeships.

The following tables provide statistics on the workload in the circuit courts for Fiscal Year 2017.

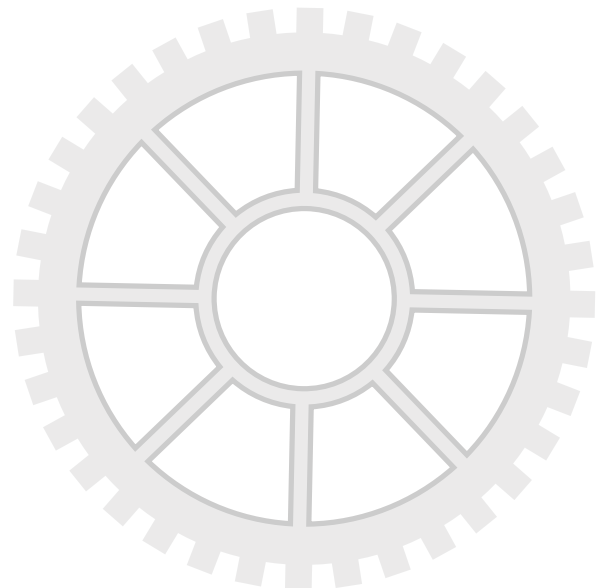
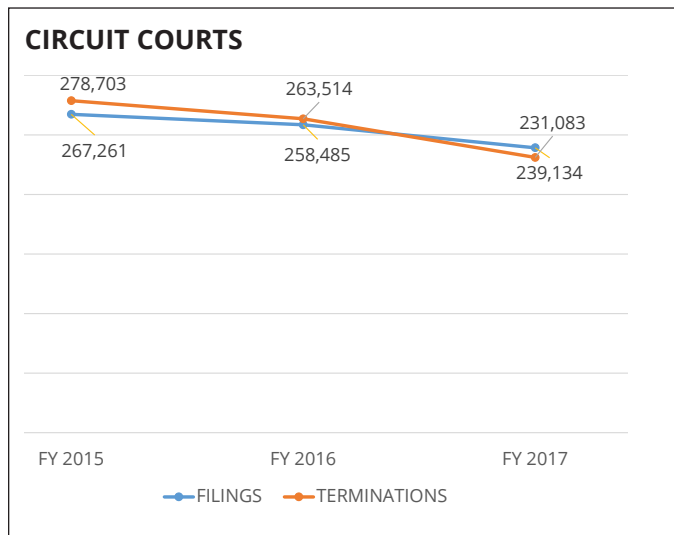


TABLE CC-1.1 CIRCUIT COURTS
ALL CASES: FILINGS AND TERMINATIONS BY JURISDICTION
Original and Reopened Cases
Fiscal Years 2015 through 2017

	FY 2015 FILINGS	FY 2015 TERMINATIONS	FY 2016 FILINGS	FY 2016 TERMINATIONS	FY 2017 FILINGS	FY 2017 TERMINATIONS
First Circuit	13,870	14,020	13,432	13,280	11,861	9,717
Dorchester	2,553	2,465	2,642	2,565	2,728	2,453
Somerset	1,656	1,634	1,551	1,495	1,355	1,189
Wicomico	5,946	6,290	5,879	5,747	5,230	3,878
Worcester	3,715	3,631	3,360	3,473	2,548	2,197
Second Circuit	15,115	16,400	14,535	15,345	12,277	11,416
Caroline	2,396	2,694	2,322	2,305	1,799	1,714
Cecil	7,070	7,668	6,458	7,114	5,256	4,677
Kent	1,105	1,252	1,127	1,177	945	972
Queen Anne's	2,408	2,558	2,448	2,593	2,332	2,170
Talbot	2,136	2,228	2,180	2,156	1,945	1,883
Third Circuit	45,039	50,356	44,719	46,667	41,534	43,060
Baltimore	33,618	38,304	33,546	34,294	30,774	31,458
Harford	11,421	12,052	11,173	12,373	10,760	11,602
Fourth Circuit	14,759	15,017	13,943	13,783	13,588	13,322
Allegany	4,524	4,382	4,376	4,083	4,454	4,005
Garrett	939	1,035	989	875	971	929
Washington	9,296	9,600	8,578	8,825	8,163	8,388
Fifth Circuit	36,519	35,405	33,163	33,995	32,717	33,987
Anne Arundel	20,710	19,027	18,003	18,109	18,361	18,780
Carroll	6,938	7,362	6,730	7,241	6,036	6,679
Howard	8,871	9,016	8,430	8,645	8,320	8,528
Sixth Circuit	44,233	44,479	43,930	45,651	43,476	43,064
Frederick	8,878	8,935	8,641	8,964	8,064	8,027
Montgomery	35,355	35,544	35,289	36,687	35,412	35,037
Seventh Circuit	52,869	55,771	52,110	53,377	44,861	38,417
Calvert	4,470	4,693	4,458	4,451	3,168	2,508
Charles	9,212	9,519	9,311	9,162	6,917	5,123
Prince George's	34,863	37,035	34,081	35,607	31,398	28,187
St. Mary's	4,324	4,524	4,260	4,157	3,618	2,599
Eighth Circuit	44,857	47,255	42,653	41,416	38,580	37,933
Baltimore City	44,857	47,255	42,653	41,416	38,580	37,933
STATE TOTALS	267,261	278,703	258,485	263,514	239,134	231,083

TABLE CC-1.2 CIRCUIT COURTS
ALL CASES: STATEWIDE FILINGS AND TERMINATIONS, BY CASE TYPE
Original and Reopened Cases
Fiscal Years 2015 through 2017

STATEWIDE	FY 2015 FILINGS	FY 2015 TERMINATIONS	FY 2016 FILINGS	FY 2016 TERMINATIONS	FY 2017 FILINGS	FY 2017 TERMINATIONS
TOTAL CIVIL-GENERAL	74,227	76,774	69,383	72,786	62,123	60,657
Motor Tort	4,535	5,170	4,718	4,820	4,808	4,984
Other Tort	4,390	4,118	4,394	3,978	4,114	4,017
Contract	4,397	4,743	4,155	4,307	4,361	4,615
Condemnation	238	213	213	199	233	169
Cont'd Confessed Judgment	1,173	1,246	1,080	1,116	953	931
Other Law	8,526	8,493	8,086	8,746	7,584	7,601
<i>Appeals</i>						
District Court - On Record	330	273	295	250	332	207
District Court - De Novo	894	755	797	730	906	726
Administrative Agency	3,160	3,371	3,185	3,212	2,754	3,071
Other General	46,075	48,234	42,166	45,200	35,849	34,268
Unreported Category	509	158	294	228	229	68
TOTAL CIVIL-FAMILY	92,471	96,071	94,329	93,609	89,887	85,909
Divorce/Nullity	31,887	32,824	33,116	32,898	31,764	31,600
Other Domestic Relations	40,487	41,227	41,376	40,423	40,688	37,381
Adoption/Guardianship	3,798	3,953	3,874	3,798	4,073	4,070
Paternity	12,023	13,860	11,376	12,139	8,753	8,388
Domestic Violence	4,276	4,207	4,587	4,351	4,609	4,470
TOTAL JUVENILE	22,973	22,906	20,522	19,857	19,801	17,043
Delinquency	19,030	19,146	16,206	15,770	15,196	13,651
Adult	38	29	48	43	23	18
Child in Need of Supervision	120	116	107	102	128	119
Child in Need of Assistance	2,419	2,308	2,633	2,550	2,835	1,867
Guardianship	402	398	429	398	451	335
Adoption	302	300	341	334	338	209
Peace Orders	591	567	592	538	719	715
Unreported Category	71	42	166	122	111	129
TOTAL CRIMINAL	77,590	82,952	74,251	77,262	67,323	67,474
Indictment/Information	37,413	40,683	35,815	36,608	34,379	33,324
<i>Appeals</i>						
District Court - Motor	1,983	2,033	2,135	2,203	1,842	1,976
District Court - Other	3,341	3,641	3,154	3,181	2,769	2,985
Jury Trial Prayed - Motor	11,372	11,988	11,805	12,227	10,022	10,346
Jury Trial Prayed - Other	22,554	24,148	20,566	21,776	17,817	18,511
Non Support	231	271	184	218	143	151
Post Conviction	231	164	201	1,029	129	171
Unreported Category	465	24	391	20	222	10
TOTAL	267,261	278,703	267,261	278,703	239,134	231,083

**TABLE CC-2.1 CIRCUIT COURTS
SMALL JURISDICTIONS
CATEGORIES OF FILINGS
Original and Reopened Cases
Fiscal Year 2017**

	CAROLINE	DORCHESTER	GARRETT	KENT
TOTAL CIVIL-GENERAL	301	675	237	204
Motor Tort	10	16	10	3
Other Tort	6	10	9	8
Contract	11	12	12	11
Condemnation	8	1	1	0
Cont'd Confessed Judgment	5	6	6	2
Other Law	4	2	8	3
<i>Appeals</i>				
District Court - On Record	1	2	1	0
District Court - De Novo	0	3	2	0
Administrative Agency	18	20	9	10
Other General	238	603	177	167
Unreported Category	0	0	2	0
TOTAL CIVIL-FAMILY	909	998	487	454
Divorce/Nullity	233	207	132	107
Other Domestic Relations	563	541	282	260
Adoption/Guardianship	4	3	12	2
Paternity	48	197	47	64
Domestic Violence	61	50	14	21
TOTAL JUVENILE	98	268	73	20
Delinquency	81	240	30	20
Adult	0	0	0	0
Child in Need of Supervision	0	0	2	0
Child in Need of Assistance	13	18	38	0
Guardianship	3	1	3	0
Adoption	0	4	0	0
Peace Orders	1	5	0	0
Unreported Category	0	0	0	0
TOTAL CRIMINAL	491	787	174	267
Indictment/Information	160	479	102	60
<i>Appeals</i>				
District Court - Motor	16	11	1	8
District Court - Other	8	32	2	9
Jury Trial Prayed - Motor	91	98	25	97
Jury Trial Prayed - Other	215	166	43	93
Non Support	1	1	0	0
Post Conviction	0	0	0	0
Unreported Category	0	0	1	0
TOTAL FILINGS	1,799	2,728	971	945

**(Continued) TABLE CC-2.1 CIRCUIT COURTS
SMALL JURISDICTIONS
CATEGORIES OF FILINGS
Original and Reopened Cases
Fiscal Year 2017**

	QUEEN ANNE'S	SOMERSET	TALBOT
TOTAL CIVIL-GENERAL	491	268	537
Motor Tort	15	6	15
Other Tort	12	6	13
Contract	21	7	20
Condemnation	2	0	3
Cont'd Confessed Judgment	10	7	13
Other Law	13	4	14
<i>Appeals</i>			
District Court - On Record	4	0	2
District Court - De Novo	5	6	7
Administrative Agency	13	64	24
Other General	396	168	426
Unreported Category	0	0	0
TOTAL CIVIL-FAMILY	735	684	778
Divorce/Nullity	293	169	280
Other Domestic Relations	350	345	386
Adoption/Guardianship	11	2	1
Paternity	61	131	75
Domestic Violence	20	37	36
TOTAL JUVENILE	60	78	52
Delinquency	54	72	42
Adult	0	0	0
Child in Need of Supervision	0	0	0
Child in Need of Assistance	6	2	2
Guardianship	0	4	3
Adoption	0	0	5
Peace Orders	0	0	0
Unreported Category	0	0	0
TOTAL CRIMINAL	1,046	325	578
Indictment/Information	297	236	358
<i>Appeals</i>			
District Court - Motor	7	1	19
District Court - Other	61	9	9
Jury Trial Prayed - Motor	376	28	56
Jury Trial Prayed - Other	305	50	136
Non Support	0	1	0
Post Conviction	0	0	0
Unreported Category	0	0	0
TOTAL FILINGS	2,332	1,355	1,945

**TABLE CC-2.2 CIRCUIT COURTS
MEDIUM JURISDICTIONS
CATEGORIES OF FILINGS
Original and Reopened Cases
Fiscal Year 2017**

	ALLEGANY	CALVERT	CECIL
TOTAL CIVIL-GENERAL	719	697	829
Motor Tort	35	49	71
Other Tort	19	5	54
Contract	14	26	66
Condemnation	3	0	18
Cont'd Confessed Judgment	6	14	21
Other Law	19	33	8
<i>Appeals</i>			
District Court - On Record	0	1	0
District Court - De Novo	6	21	22
Administrative Agency	157	56	24
Other General	445	492	545
Unreported Category	15	0	0
TOTAL CIVIL-FAMILY	1,781	1,255	1,682
Divorce/Nullity	478	482	619
Other Domestic Relations	998	475	901
Adoption/Guardianship	12	23	14
Paternity	232	201	61
Domestic Violence	61	74	87
TOTAL JUVENILE	332	337	259
Delinquency	173	296	168
Adult	0	0	0
Child in Need of Supervision	3	0	0
Child in Need of Assistance	129	21	56
Guardianship	17	3	23
Adoption	10	7	12
Peace Orders	0	10	0
Unreported Category	0	0	0
TOTAL CRIMINAL	1,622	879	2,486
Indictment/Information	535	552	708
<i>Appeals</i>			
District Court - Motor	4	3	19
District Court - Other	10	9	30
Jury Trial Prayed - Motor	272	125	707
Jury Trial Prayed - Other	789	187	953
Non Support	0	3	69
Post Conviction	2	0	0
Unreported Category	10	0	0
TOTAL FILINGS	4,454	3,168	5,256

**(Continued) TABLE CC-2.2 CIRCUIT COURTS
MEDIUM JURISDICTIONS
CATEGORIES OF FILINGS
Original and Reopened Cases
Fiscal Year 2017**

	ST. MARY'S	WICOMICO	WORCESTER
TOTAL CIVIL-GENERAL	681	1,431	601
Motor Tort	51	39	31
Other Tort	28	34	27
Contract	36	34	41
Condemnation	0	0	16
Cont'd Confessed Judgment	21	20	26
Other Law	5	17	11
<i>Appeals</i>			
District Court - On Record	1	2	1
District Court - De Novo	14	11	9
Administrative Agency	39	45	22
Other General	486	1,229	417
Unreported Category	0	0	0
TOTAL CIVIL-FAMILY	1,881	2,086	914
Divorce/Nullity	580	603	284
Other Domestic Relations	916	1,147	509
Adoption/Guardianship	19	27	6
Paternity	245	198	107
Domestic Violence	121	111	8
TOTAL JUVENILE	349	413	206
Delinquency	279	388	154
Adult	4	4	6
Child in Need of Supervision	0	0	0
Child in Need of Assistance	50	11	40
Guardianship	8	0	2
Adoption	8	1	3
Peace Orders	0	9	1
Unreported Category	0	0	0
TOTAL CRIMINAL	707	1,300	827
Indictment/Information	465	868	501
<i>Appeals</i>			
District Court - Motor	4	15	20
District Court - Other	23	53	36
Jury Trial Prayed - Motor	41	119	129
Jury Trial Prayed - Other	173	243	140
Non Support	1	2	1
Post Conviction	0	0	0
Unreported Category	0	0	0
TOTAL FILINGS	3,618	5,230	2,548

**TABLE CC-2.3 CIRCUIT COURTS
MEDIUM-LARGE JURISDICTIONS
CATEGORIES OF FILINGS
Original and Reopened Cases
Fiscal Year 2017**

	CARROLL	CHARLES	FREDERICK
TOTAL CIVIL-GENERAL	1,154	1,642	1,570
Motor Tort	79	152	88
Other Tort	30	47	54
Contract	63	74	103
Condemnation	27	2	21
Cont'd Confessed Judgment	25	23	36
Other Law	58	36	92
<i>Appeals</i>			
District Court - On Record	0	9	9
District Court - De Novo	13	68	27
Administrative Agency	69	78	86
Other General	767	1,153	1,048
Unreported Category	23	0	6
TOTAL CIVIL-FAMILY	2,327	2,924	3,317
Divorce/Nullity	987	1,028	1,422
Other Domestic Relations	939	1,256	1,371
Adoption/Guardianship	27	19	34
Paternity	130	342	279
Domestic Violence	244	279	211
TOTAL JUVENILE	502	782	632
Delinquency	439	703	531
Adult	4	4	0
Child in Need of Supervision	2	0	0
Child in Need of Assistance	17	58	37
Guardianship	8	6	18
Adoption	3	11	24
Peace Orders	27	0	22
Unreported Category	2	0	0
TOTAL CRIMINAL	2,053	1,569	2,545
Indictment/Information	664	831	940
<i>Appeals</i>			
District Court - Motor	45	23	32
District Court - Other	72	57	49
Jury Trial Prayed - Motor	478	308	617
Jury Trial Prayed - Other	756	336	899
Non Support	0	1	0
Post Conviction	0	13	0
Unreported Category	38	0	8
TOTAL FILINGS	6,036	6,917	8,064

**(Continued) TABLE CC-2.3 CIRCUIT COURTS
MEDIUM-LARGE JURISDICTIONS
CATEGORIES OF FILINGS
Original and Reopened Cases
Fiscal Year 2017**

	HARFORD	HOWARD	WASHINGTON
TOTAL CIVIL-GENERAL	1,857	2,635	1,110
Motor Tort	131	177	65
Other Tort	48	122	44
Contract	102	198	59
Condemnation	3	1	2
Cont'd Confessed Judgment	43	65	19
Other Law	157	153	54
<i>Appeals</i>			
District Court - On Record	11	19	11
District Court - De Novo	25	25	15
Administrative Agency	81	113	89
Other General	1,245	1,743	699
Unreported Category	11	19	53
TOTAL CIVIL-FAMILY	4,452	2,772	4,159
Divorce/Nullity	1,521	1,498	945
Other Domestic Relations	1,746	891	2,472
Adoption/Guardianship	47	43	20
Paternity	1,003	189	703
Domestic Violence	135	151	19
TOTAL JUVENILE	884	869	875
Delinquency	679	811	717
Adult	0	0	0
Child in Need of Supervision	0	0	0
Child in Need of Assistance	106	19	66
Guardianship	19	3	24
Adoption	21	6	15
Peace Orders	59	30	52
Unreported Category	0	0	1
TOTAL CRIMINAL	3,567	2,044	2,019
Indictment/Information	1,096	894	1,112
<i>Appeals</i>			
District Court - Motor	156	106	31
District Court - Other	313	91	63
Jury Trial Prayed - Motor	651	462	332
Jury Trial Prayed - Other	1,339	479	421
Non Support	0	0	44
Post Conviction	3	2	1
Unreported Category	9	10	15
TOTAL FILINGS	10,760	8,320	8,163

**TABLE CC-2.4 CIRCUIT COURTS
LARGE JURISDICTIONS
CATEGORIES OF FILINGS
Original and Reopened Cases
Fiscal Year 2017**

	ANNE ARUNDEL	BALTIMORE	BALTIMORE CITY	MONTGOMERY	PRINCE GEORGE'S
TOTAL CIVIL-GENERAL	5,183	8,403	12,179	10,950	7,769
Motor Tort	365	764	1,095	499	1,042
Other Tort	276	378	1,686	701	497
Contract	343	605	331	1,702	470
Condemnation	2	7	95	11	10
Cont'd Confessed Judgment	106	133	71	218	57
Other Law	58	159	774	5,022	880
<i>Appeals</i>					
District Court - On Record	18	37	71	72	60
District Court - De Novo	48	104	91	179	205
Administrative Agency	299	389	546	330	173
Other General	3,668	5,769	7,377	2,216	4,375
Unreported Category	0	58	42	0	0
TOTAL CIVIL-FAMILY	7,886	8,894	8,338	14,868	15,306
Divorce/Nullity	3,472	3,730	2,406	5,191	5,097
Other Domestic Relations	3,441	3,857	4,170	5,687	7,185
Adoption/Guardianship	121	155	42	2,500	929
Paternity	439	682	1,323	849	1,147
Domestic Violence	413	470	397	641	948
TOTAL JUVENILE	687	3,646	4,255	3,101	1,023
Delinquency	543	3,085	2,423	2,567	701
Adult	0	1	0	0	0
Child in Need of Supervision	0	0	121	0	0
Child in Need of Assistance	88	365	1,232	215	246
Guardianship	19	78	137	50	22
Adoption	22	45	107	25	9
Peace Orders	15	71	223	155	39
Unreported Category	0	1	12	89	6
TOTAL CRIMINAL	4,605	9,831	13,808	6,493	7,300
Indictment/Information	2,719	5,054	7,677	4,758	3,313
<i>Appeals</i>					
District Court - Motor	85	322	154	661	99
District Court - Other	202	406	291	742	192
Jury Trial Prayed - Motor	432	1,342	859	163	2,214
Jury Trial Prayed - Other	1,164	2,629	4,731	169	1,401
Non Support	2	17	0	0	0
Post Conviction	1	0	26	0	81
Unreported Category	0	61	70	0	0
TOTAL FILINGS	18,361	30,774	38,580	35,412	31,398

**TABLE CC-3.1 CIRCUIT COURTS
SMALL JURISDICTIONS: CATEGORIES OF TERMINATIONS
Original and Reopened Cases
Fiscal Year 2017**

	CAROLINE	DORCHESTER	GARRETT	KENT
TOTAL CIVIL-GENERAL	306	694	241	218
Motor Tort	10	12	8	6
Other Tort	4	12	6	10
Contract	16	14	7	12
Condemnation	3	0	0	0
Cont'd Confessed Judgment	4	9	5	2
Other Law	3	8	9	3
<i>Appeals</i>				
District Court - On Record	1	2	0	2
District Court - De Novo	0	2	0	0
Administrative Agency	19	13	13	18
Other General	246	622	191	165
Unreported Category	0	0	2	0
TOTAL CIVIL-FAMILY	798	858	491	457
Divorce/Nullity	234	197	143	117
Other Domestic Relations	440	450	269	238
Adoption/Guardianship	4	4	11	3
Paternity	62	160	55	77
Domestic Violence	58	47	13	22
TOTAL JUVENILE	139	201	18	13
Delinquency	126	172	16	12
Adult	0	0	0	0
Child in Need of Supervision	0	0	0	0
Child in Need of Assistance	11	14	2	1
Guardianship	1	5	0	0
Adoption	0	4	0	0
Peace Orders	1	6	0	0
Unreported Category	0	0	0	0
TOTAL CRIMINAL	471	700	179	284
Indictment/Information	145	417	97	81
<i>Appeals</i>				
District Court - Motor	13	11	2	9
District Court - Other	7	32	2	11
Jury Trial Prayed - Motor	98	91	21	94
Jury Trial Prayed - Other	207	149	57	88
Non Support	1	0	0	0
Post Conviction	0	0	0	1
Unreported Category	0	0	0	0
TOTAL TERMINATIONS	1,714	2,453	929	972

**(Continued) TABLE CC-3.1 CIRCUIT COURTS
SMALL JURISDICTIONS: CATEGORIES OF TERMINATIONS
Original and Reopened Cases
Fiscal Year 2017**

	QUEEN ANNE'S	SOMERSET	TALBOT
TOTAL CIVIL-GENERAL	548	264	429
Motor Tort	22	5	25
Other Tort	11	6	9
Contract	22	7	23
Condemnation	4	0	1
Cont'd Confessed Judgment	10	7	13
Other Law	29	9	9
<i>Appeals</i>			
District Court - On Record	1	0	1
District Court - De Novo	5	7	7
Administrative Agency	17	52	26
Other General	427	171	315
Unreported Category	0	0	0
TOTAL CIVIL-FAMILY	708	616	738
Divorce/Nullity	278	157	256
Other Domestic Relations	357	307	364
Adoption/Guardianship	9	3	2
Paternity	46	112	76
Domestic Violence	18	37	40
TOTAL JUVENILE	22	47	40
Delinquency	20	37	37
Adult	0	0	0
Child in Need of Supervision	1	0	0
Child in Need of Assistance	1	8	3
Guardianship	0	2	0
Adoption	0	0	0
Peace Orders	0	0	0
Unreported Category	0	0	0
TOTAL CRIMINAL	892	262	676
Indictment/Information	227	197	431
<i>Appeals</i>			
District Court - Motor	8	1	18
District Court - Other	55	7	14
Jury Trial Prayed - Motor	333	24	55
Jury Trial Prayed - Other	269	33	158
Non Support	0	0	0
Post Conviction	0	0	0
Unreported Category	0	0	0
TOTAL TERMINATIONS	2,170	1,189	1,883

**TABLE CC-3.2 CIRCUIT COURTS
MEDIUM JURISDICTIONS: CATEGORIES OF TERMINATIONS
Original and Reopened Cases
Fiscal Year 2017**

	ALLEGANY	CALVERT	CECIL
TOTAL CIVIL-GENERAL	730	746	863
Motor Tort	31	46	74
Other Tort	17	2	35
Contract	11	26	54
Condemnation	3	0	9
Cont'd Confessed Judgment	3	4	21
Other Law	25	38	7
<i>Appeals</i>			
District Court - On Record	1	2	0
District Court - De Novo	6	21	25
Administrative Agency	191	65	25
Other General	442	542	613
Unreported Category	0	0	0
TOTAL CIVIL-FAMILY	1,638	846	1,518
Divorce/Nullity	434	347	593
Other Domestic Relations	925	327	779
Adoption/Guardianship	13	22	10
Paternity	213	76	52
Domestic Violence	53	74	84
TOTAL JUVENILE	155	249	112
Delinquency	147	211	39
Adult	0	0	0
Child in Need of Supervision	3	0	0
Child in Need of Assistance	5	19	42
Guardianship	0	4	17
Adoption	0	4	14
Peace Orders	0	11	0
Unreported Category	0	0	0
TOTAL CRIMINAL	1,482	667	2,184
Indictment/Information	512	393	623
<i>Appeals</i>			
District Court - Motor	4	4	17
District Court - Other	11	9	28
Jury Trial Prayed - Motor	247	106	566
Jury Trial Prayed - Other	706	155	875
Non Support	0	0	75
Post Conviction	2	0	0
Unreported Category	0	0	0
TOTAL TERMINATIONS	4,005	2,508	4,677

**(Continued) TABLE CC-3.2 CIRCUIT COURTS
MEDIUM JURISDICTIONS: CATEGORIES OF TERMINATIONS
Original and Reopened Cases
Fiscal Year 2017**

	ST. MARY'S	WICOMICO	WORCESTER
TOTAL CIVIL-GENERAL	705	975	589
Motor Tort	53	42	25
Other Tort	18	30	35
Contract	37	27	32
Condemnation	1	0	1
Cont'd Confessed Judgment	10	19	23
Other Law	6	18	7
<i>Appeals</i>			
District Court - On Record	1	1	2
District Court - De Novo	11	5	10
Administrative Agency	44	46	25
Other General	524	787	429
Unreported Category	0	0	0
TOTAL CIVIL-FAMILY	1,188	1,686	777
Divorce/Nullity	463	532	279
Other Domestic Relations	527	846	401
Adoption/Guardianship	15	24	8
Paternity	69	180	81
Domestic Violence	114	104	8
TOTAL JUVENILE	178	222	130
Delinquency	122	194	96
Adult	0	0	3
Child in Need of Supervision	0	0	0
Child in Need of Assistance	36	13	22
Guardianship	9	3	4
Adoption	11	1	4
Peace Orders	0	11	1
Unreported Category	0	0	0
TOTAL CRIMINAL	528	995	701
Indictment/Information	313	670	405
<i>Appeals</i>			
District Court - Motor	5	10	19
District Court - Other	17	46	29
Jury Trial Prayed - Motor	40	99	115
Jury Trial Prayed - Other	153	169	125
Non Support	0	1	8
Post Conviction	0	0	0
Unreported Category	0	0	0
TOTAL TERMINATIONS	2,599	3,878	2,197

**TABLE CC-3.3 CIRCUIT COURTS
MEDIUM-LARGE JURISDICTIONS: CATEGORIES OF TERMINATIONS
Original and Reopened Cases
Fiscal Year 2017**

	CARROLL	CHARLES	FREDERICK
TOTAL CIVIL-GENERAL	1,282	1,701	1,675
Motor Tort	75	132	81
Other Tort	28	48	55
Contract	59	73	107
Condemnation	1	2	10
Cont'd Confessed Judgment	23	15	27
Other Law	81	51	106
<i>Appeals</i>			
District Court - On Record	1	7	4
District Court - De Novo	4	49	12
Administrative Agency	79	84	73
Other General	926	1,240	1,197
Unreported Category	5	0	3
TOTAL CIVIL-FAMILY	2,561	1,906	3,297
Divorce/Nullity	1,084	718	1,420
Other Domestic Relations	1,060	769	1,383
Adoption/Guardianship	25	15	37
Paternity	138	153	261
Domestic Violence	254	251	196
TOTAL JUVENILE	476	301	500
Delinquency	414	233	480
Adult	9	4	0
Child in Need of Supervision	2	0	0
Child in Need of Assistance	16	43	1
Guardianship	9	12	0
Adoption	0	9	0
Peace Orders	26	0	19
Unreported Category	0	0	0
TOTAL CRIMINAL	2,360	1,215	2,555
Indictment/Information	738	507	971
<i>Appeals</i>			
District Court - Motor	49	23	34
District Court - Other	77	51	44
Jury Trial Prayed - Motor	569	321	562
Jury Trial Prayed - Other	918	313	944
Non Support	0	0	0
Post Conviction	0	0	0
Unreported Category	9	0	0
TOTAL TERMINATIONS	6,679	5,123	8,027

**(Continued) TABLE CC-3.3 CIRCUIT COURTS
MEDIUM-LARGE JURISDICTIONS: CATEGORIES OF TERMINATIONS
Original and Reopened Cases
Fiscal Year 2017**

	HARFORD	HOWARD	WASHINGTON
TOTAL CIVIL-GENERAL	2,213	2,898	1,202
Motor Tort	139	178	70
Other Tort	56	116	43
Contract	116	320	67
Condemnation	12	6	0
Cont'd Confessed Judgment	45	87	14
Other Law	176	174	57
<i>Appeals</i>			
District Court - On Record	4	5	5
District Court - De Novo	11	14	6
Administrative Agency	110	122	99
Other General	1,540	1,872	831
Unreported Category	4	4	10
TOTAL CIVIL-FAMILY	4,810	2,727	4,298
Divorce/Nullity	1,716	1,495	949
Other Domestic Relations	1,842	864	2,553
Adoption/Guardianship	40	40	20
Paternity	1,084	183	760
Domestic Violence	128	145	16
TOTAL JUVENILE	773	821	770
Delinquency	662	788	712
Adult	0	0	0
Child in Need of Supervision	0	0	0
Child in Need of Assistance	50	0	4
Guardianship	1	1	0
Adoption	0	0	2
Peace Orders	60	31	52
Unreported Category	0	1	0
TOTAL CRIMINAL	3,806	2,082	2,118
Indictment/Information	1,158	937	1,178
<i>Appeals</i>			
District Court - Motor	166	116	34
District Court - Other	300	82	65
Jury Trial Prayed - Motor	730	459	312
Jury Trial Prayed - Other	1,448	485	478
Non Support	0	0	49
Post Conviction	4	3	1
Unreported Category	0	0	1
TOTAL TERMINATIONS	11,602	8,528	8,388

**TABLE CC-3.4 CIRCUIT COURTS
LARGE JURISDICTIONS: CATEGORIES OF TERMINATIONS
Original and Reopened Cases
Fiscal Year 2017**

	ANNE ARUNDEL	BALTIMORE	BALTIMORE CITY	MONTGOMERY	PRINCE GEORGE'S
TOTAL CIVIL-GENERAL	5,785	9,377	11,799	11,112	4,138
Motor Tort	358	713	1,077	484	1,318
Other Tort	275	536	1,266	669	730
Contract	386	654	351	1,571	623
Condemnation	14	11	65	3	23
Cont'd Confessed Judgment	77	148	66	215	84
Other Law	50	230	659	4,765	1,081
<i>Appeals</i>					
District Court - On Record	9	25	27	61	45
District Court - De Novo	25	56	30	186	234
Administrative Agency	299	451	571	462	167
Other General	4,292	6,517	7,683	2,696	0
Unreported Category	0	36	4	0	0
TOTAL CIVIL-FAMILY	7,978	8,167	8,282	14,428	15,136
Divorce/Nullity	3,678	3,874	2,136	5,206	5,294
Other Domestic Relations	3,366	3,279	4,023	5,219	6,793
Adoption/Guardianship	126	139	35	2,526	939
Paternity	401	434	1,704	822	1,189
Domestic Violence	407	441	384	655	921
TOTAL JUVENILE	797	3,131	3,629	3,016	1,303
Delinquency	621	3,031	1,948	2,491	1,042
Adult	0	2	0	0	0
Child in Need of Supervision	0	0	113	0	0
Child in Need of Assistance	87	27	1,071	215	176
Guardianship	53	6	157	30	21
Adoption	20	0	106	23	11
Peace Orders	16	65	218	157	41
Unreported Category	0	0	16	100	12
TOTAL CRIMINAL	4,220	10,783	14,223	6,481	7,610
Indictment/Information	2,398	5,408	7,834	4,704	2,980
<i>Appeals</i>					
District Court - Motor	90	332	172	647	192
District Court - Other	215	472	334	799	278
Jury Trial Prayed - Motor	409	1,509	924	169	2,493
Jury Trial Prayed - Other	1,106	3,046	4,939	162	1,528
Non Support	1	16	0	0	0
Post Conviction	1	0	20	0	139
Unreported Category	0	0	0	0	0
TOTAL TERMINATIONS	18,780	31,458	37,933	35,037	28,354

**TABLE CC-4 CIRCUIT COURTS
CIVIL-GENERAL FILINGS AND TERMINATIONS
Original and Reopened Cases
Fiscal Years 2015 through 2017**

	FY 2015 FILINGS	FY 2015 TERMINATIONS	FY 2016 FILINGS	FY 2016 TERMINATIONS	FY 2017 FILINGS	FY 2017 TERMINATIONS
First Circuit	3,207	3,448	2,828	2,901	2,975	2,522
Dorchester	589	623	543	562	675	694
Somerset	417	427	361	380	268	264
Wicomico	975	1,134	1,145	1,105	1,431	975
Worcester	1,226	1,264	779	854	601	589
Second Circuit	3,052	3,365	2,986	3,197	2,362	2,364
Caroline	379	461	315	306	301	306
Cecil	1,255	1,328	1,333	1,442	829	863
Kent	251	306	246	300	204	218
Queen Anne's	597	680	579	612	491	548
Talbot	570	590	513	537	537	429
Third Circuit	11,922	13,096	11,421	11,746	10,260	11,590
Baltimore	9,655	10,783	9,304	9,452	8,403	9,377
Harford	2,267	2,313	2,117	2,294	1,857	2,213
Fourth Circuit	2,647	2,694	2,357	2,337	2,066	2,173
Allegany	1,022	1,004	928	822	719	730
Garrett	200	200	184	197	237	241
Washington	1,425	1,490	1,245	1,318	1,110	1,202
Fifth Circuit	9,948	9,730	8,947	9,056	8,972	9,965
Anne Arundel	5,510	5,178	5,032	4,664	5,183	5,785
Carroll	1,286	1,319	1,180	1,481	1,154	1,282
Howard	3,152	3,233	2,735	2,911	2,635	2,898
Sixth Circuit	13,878	14,084	13,236	14,718	12,520	12,787
Frederick	1,972	1,975	1,814	1,986	1,570	1,675
Montgomery	11,906	12,109	11,422	12,732	10,950	11,112
Seventh Circuit	14,953	15,812	13,771	15,524	10,789	7,290
Calvert	983	1,140	1,043	997	697	746
Charles	2,261	2,250	2,035	1,934	1,642	1,701
Prince George's	10,789	11,428	9,771	11,666	7,769	4,138
St. Mary's	920	994	922	927	681	705
Eighth Circuit	14,620	14,545	13,837	13,307	12,179	11,799
Baltimore City	14,620	14,545	13,837	13,307	12,179	11,799
STATE TOTALS	74,227	76,774	69,383	72,786	62,123	60,657

**TABLE CC-5 CIRCUIT COURTS
CIVIL-FAMILY FILINGS AND TERMINATIONS
Original and Reopened Cases
Fiscal Years 2015 through 2017**

	FY 2015 FILINGS	FY 2015 TERMINATIONS	FY 2016 FILINGS	FY 216 TERMINATIONS	FY 2017 FILINGS	FY 2017 TERMINATIONS
First Circuit	4,891	4,589	4,579	4,534	4,682	3,937
Dorchester	1,046	894	1,019	960	998	858
Somerset	754	724	758	676	684	616
Wicomico	1,979	2,002	1,667	1,753	2,086	1,686
Worcester	1,112	969	1,135	1,145	914	777
Second Circuit	5,114	5,345	4,868	4,782	4,558	4,219
Caroline	1,057	1,182	1,016	940	909	798
Cecil	2,183	2,131	1,978	1,961	1,682	1,518
Kent	475	545	459	474	454	457
Queen Anne's	662	721	663	680	735	708
Talbot	737	766	752	727	778	738
Third Circuit	14,315	16,854	14,697	14,964	13,346	12,977
Baltimore	9,596	11,815	9,899	9,346	8,894	8,167
Harford	4,719	5,039	4,798	5,618	4,452	4,810
Fourth Circuit	7,183	7,178	6,800	6,695	6,427	6,427
Allegany	1,904	1,874	1,841	1,696	1,781	1,638
Garrett	478	521	544	440	487	491
Washington	4,801	4,783	4,415	4,559	4,159	4,298
Fifth Circuit	12,267	11,353	13,136	12,913	12,985	13,266
Anne Arundel	7,195	6,160	7,868	7,621	7,886	7,978
Carroll	2,298	2,491	2,655	2,522	2,327	2,561
Howard	2,774	2,702	2,613	2,770	2,772	2,727
Sixth Circuit	18,155	18,163	18,244	18,417	18,185	17,725
Frederick	3,570	3,493	3,537	3,471	3,317	3,297
Montgomery	14,585	14,670	14,707	14,946	14,868	14,428
Seventh Circuit	22,077	22,908	22,806	22,375	21,366	19,076
Calvert	2,140	2,051	2,016	2,043	1,255	846
Charles	3,321	3,434	3,681	3,668	2,924	1,906
Prince George's	14,365	15,036	14,846	14,605	15,306	15,136
St. Mary's	2,251	2,387	2,263	2,059	1,881	1,188
Eighth Circuit	8,469	9,681	9,199	8,929	8,338	8,282
Baltimore City	8,469	9,681	9,199	8,929	8,338	8,282
STATE TOTALS	92,471	96,071	94,329	93,609	89,887	85,909

**TABLE CC-6 CIRCUIT COURTS
DOMESTIC VIOLENCE PROTECTIVE ORDER DISPOSITIONS
Fiscal Year 2017**

	TEMPORARY PROTECTIVE ORDERS DISPOSED ¹			FINAL PROTECTIVE ORDERS DISPOSED ¹		
	Orders Granted	Orders Denied/Dismissed	Orders Rescinded	Orders Granted	Orders Denied/Dismissed ²	Orders Rescinded
First Circuit	186	33	2	91	61	11
Dorchester	37	6	2	24	9	2
Somerset	28	5	0	10	16	3
Wicomico	117	20	0	53	34	6
Worcester	4	2	0	4	2	0
Second Circuit	209	25	0	95	79	12
Caroline	61	5	0	32	24	6
Cecil	101	8	0	40	32	3
Kent	17	2	0	8	7	1
Queen Anne's	19	2	0	8	9	0
Talbot	11	8	0	7	7	2
Third Circuit	450	153	3	219	287	11
Baltimore	314	130	2	163	180	3
Harford	136	23	1	56	107	8
Fourth Circuit	29	14	0	50	53	3
Allegany	26	14	0	14	10	2
Garrett	0	0	0	0	0	0
Washington	3	0	0	36	43	1
Fifth Circuit	558	90	1	321	318	20
Anne Arundel	235	32	0	136	166	2
Carroll	220	30	0	128	112	10
Howard	103	28	1	57	40	8
Sixth Circuit	500	123	1	272	385	7
Frederick	224	57	1	104	109	7
Montgomery	276	66	0	168	276	0
Seventh Circuit	739	252	6	425	619	18
Calvert	36	17	0	26	30	5
Charles	263	31	2	129	118	5
Prince George's	314	182	2	202	434	5
St. Mary's	126	22	2	68	37	3
Eighth Circuit	471	44	3	183	171	7
Baltimore City	471	44	3	183	171	7
STATE TOTALS	3,142	734	16	1,656	1,973	89

1. Temporary and final protective orders dispositions represent the first dispositive action (i.e., granted, denied, dismissed, etc.) on petitions at each stage (temporary and final). Totals do not include dispositions on modified, reissued, or extended orders. A single case may have more than one dispositive event occur at the temporary and/or final protective order stages, but only the first dispositive event at each stage is recorded in this table.
2. Temporary and final protective orders denied/dismissed may also include orders withdrawn.

**TABLE CC-7 CIRCUIT COURTS
CRIMINAL FILINGS AND TERMINATIONS
Original and Reopened Cases
Fiscal Years 2015 through 2017**

	FY 2015 FILINGS	FY 2015 TERMINATIONS	FY 2016 FILINGS	FY 2016 TERMINATIONS	FY 2017 FILINGS	FY 2017 TERMINATIONS
First Circuit	3,758	4,050	3,955	3,880	3,239	2,658
Dorchester	725	796	795	779	787	700
Somerset	355	380	340	319	325	262
Wicomico	1,597	1,763	1,656	1,574	1,300	995
Worcester	1,081	1,111	1,164	1,208	827	701
Second Circuit	6,138	6,859	5,942	6,633	4,868	4,507
Caroline	798	884	848	926	491	471
Cecil	3,245	3,827	2,797	3,348	2,486	2,184
Kent	328	362	373	349	267	284
Queen Anne's	1,087	1,086	1,146	1,246	1,046	892
Talbot	680	700	778	764	578	676
Third Circuit	14,375	15,920	14,773	16,262	13,398	14,589
Baltimore	10,775	12,049	11,381	12,643	9,831	10,783
Harford	3,600	3,871	3,392	3,619	3,567	3,806
Fourth Circuit	3,612	3,790	3,533	3,552	3,815	3,779
Allegany	1,267	1,200	1,247	1,236	1,622	1,482
Garrett	175	231	179	166	174	179
Washington	2,170	2,359	2,107	2,150	2,019	2,118
Fifth Circuit	11,146	11,372	8,813	9,652	8,702	8,662
Anne Arundel	6,524	6,342	4,242	4,725	4,605	4,220
Carroll	2,683	2,896	2,377	2,701	2,053	2,360
Howard	1,939	2,134	2,194	2,226	2,044	2,082
Sixth Circuit	8,973	9,204	9,293	9,408	9,038	9,036
Frederick	2,573	2,731	2,686	2,890	2,545	2,555
Montgomery	6,400	6,473	6,607	6,518	6,493	6,481
Seventh Circuit	12,685	13,446	12,627	12,337	10,455	10,020
Calvert	1,020	1,189	1,121	1,125	879	667
Charles	2,472	2,706	2,527	2,512	1,569	1,215
Prince George's	8,440	8,753	8,249	7,869	7,300	7,610
St. Mary's	753	798	730	831	707	528
Eighth Circuit	16,903	18,311	15,315	15,538	13,808	14,223
Baltimore City	16,903	18,311	15,315	15,538	13,808	14,223
STATE TOTALS	77,590	82,952	74,251	77,262	67,323	67,474

**TABLE CC-8 CIRCUIT COURTS
JUVENILE FILINGS AND TERMINATIONS
Original and Reopened Cases
Fiscal Years 2015 through 2017**

	FY 2015 FILINGS	FY 2015 TERMINATIONS	FY 2016 FILINGS	FY 2016 TERMINATIONS	FY 2017 FILINGS	FY 2017 TERMINATIONS
First Circuit	2,014	1,933	2,070	1,965	965	600
Dorchester	193	152	285	264	268	201
Somerset	130	103	92	120	78	47
Wicomico	1,395	1,391	1,411	1,315	413	222
Worcester	296	287	282	266	206	130
Second Circuit	811	831	739	733	489	326
Caroline	162	167	143	133	98	139
Cecil	387	382	350	363	259	112
Kent	51	39	49	54	20	13
Queen Anne's	62	71	60	55	60	22
Talbot	149	172	137	128	52	40
Third Circuit	4,427	4,486	3,828	3,695	4,530	3,904
Baltimore	3,592	3,657	2,962	2,853	3,646	3,131
Harford	835	829	866	842	884	773
Fourth Circuit	1,317	1,355	1,253	1,199	1,280	943
Allegany	331	304	360	329	332	155
Garrett	86	83	82	72	73	18
Washington	900	968	811	798	875	770
Fifth Circuit	3,158	2,950	2,267	2,374	2,058	2,094
Anne Arundel	1,481	1,347	861	1,099	687	797
Carroll	671	656	518	537	502	476
Howard	1,006	947	888	738	869	821
Sixth Circuit	3,227	3,028	3,157	3,108	3,733	3,516
Frederick	763	736	604	617	632	500
Montgomery	2,464	2,292	2,553	2,491	3,101	3,016
Seventh Circuit	3,154	3,605	2,906	3,141	2,251	2,031
Calvert	327	313	278	286	337	249
Charles	1,158	1,129	1,068	1,048	782	301
Prince George's	1,269	1,818	1,215	1,467	1,023	1,303
St. Mary's	400	345	345	340	349	178
Eighth Circuit	4,865	4,718	4,302	3,642	4,255	3,629
Baltimore City	4,865	4,718	4,302	3,642	4,255	3,629
STATE TOTALS	22,973	22,906	20,522	19,857	19,801	17,043

**TABLE CC-9 CIRCUIT COURTS
CIRCUIT COURTS BUSINESS-RELATED WORKLOAD
FISCAL YEAR 2017**

	BUS. LIC.	MARR. LIC.	MARR. CERTIFS. PROC.	MARR. CEREM. PERFRMD [D. CLKS, CLKS, JUDGES]	LAND INSTR. RECRD.	JDGMNTS. & LIENS RECRD.	OATHS ADMIN. & NOTARY COMM.	NOTARY CERTIFS & AUTHENT.	PASS-PORTS	JUROR QUALIF. FORMS	LAND RECORDS CASHIER COLLECT. ¹	LICENSE CASHIER COLLECT. ¹
FIRST CIRCUIT												
Dorchester	642	301	280	78	4,771	540	163	16	N/A	N/A	\$4,930,398	\$83,859
Somerset	470	120	102	42	2,476	358	86	55	0	3,690	\$1,319,984	\$35,177
Wicomico	1,679	717	630	319	11,374	468	468	134	N/A	10,914	\$3,014,632	\$266,980
Worcester	3,306	801	817	143	16,618	154	271	18	0	0	\$17,846,660	\$225,028
SECOND CIRCUIT												
Caroline	665	209	199	69	4,303	748	141	1	0	2,122	\$1,360,468	\$58,564
Cecil	1,535	1,217	1,147	594	13,337	1,275	99	191	N/A	11,840	\$4,575,857	\$266,569
Kent	544	207	144	98	3,200	405	75	6	0	4,800	\$3,392,950	\$59,208
Queen Anne's	1,106	593	581	84	9,867	1,104	553	38	127	3,200	\$11,194,809	\$135,971
Talbot	1,196	444	418	104	6,377	403	177	12	N/A	4,667	\$8,695,957	\$161,462
THIRD CIRCUIT												
Baltimore	10,190	2,693	5,131	2,630	100,184	12,917	3,921	2,497	0	0	\$31,991,916	\$2,978,446
Harford	3,165	1,595	1,491	542	37,350	2,815	1,264	1,196	N/A	N/A	\$23,763,917	\$531,636
FOURTH CIRCUIT												
Allegany	1,555	481	418	195	6,726	578	290	57	305	3,011	\$3,900,760	\$182,774
Garrett	856	365	354	81	5,408	523	145	32	N/A	N/A	\$7,564,634	\$107,847
Washington	2,631	966	917	384	17,948	2,624	743	105	588	3,471	\$13,946,864	\$379,321
FIFTH CIRCUIT												
Anne Arundel	8,011	4,572	4,252	1,819	91,087	30,422	2,457	10,519	1,893	N/A	\$35,517,041	\$1,506,211
Carroll	2,780	975	907	368	26,164	1,357	905	275	N/A	N/A	\$6,959,458	\$362,258
Howard	2,939	2,153	2,002	1,151	44,764	3,200	1,231	1,083	N/A	16,880	\$53,361,108	\$645,899
SIXTH CIRCUIT												
Frederick	3,299	2,223	2,116	833	40,989	4,638	1,170	555	N/A	17,425	\$15,171,771	\$470,016
Montgomery	10,731	6,018	2,261	5,319	126,410	12,345	3,566	3,254	392	County	\$77,158,838	\$1,499,729
SEVENTH CIRCUIT												
Calvert	1,227	569	542	176	16,154	999	507	31	0	5,000	\$14,994,811	\$118,056
Charles	1,953	950	892	502	31,430	9	710	110	0	25,360	\$8,265,102	\$336,344
Prince George's	8,859	3,201	5,904	3,392	124,579	0	20	1,214	922	N/A	\$64,113,265	\$1,899,223
St. Mary's ²	1,682	774	726	264	16,512	1,120	422	79	N/A	7,970	\$17,303,142	
EIGHTH CIRCUIT												
Baltimore City	7,967	3,762	3,543	1,324	67,720	11,108	N/A	807	N/A	242,425	\$23,424,074	\$2,311,574
STATEWIDE TOTALS³	78,988	35,906	35,774	20,511	825,748	90,110	19,384	22,285	4,227	362,775	\$453,768,415	\$14,622,152

"N/A" denotes functions not performed by respective clerk's offices.

1. Figures have been rounded to the nearest dollar.

2. St. Mary's County land records and license collections figures are combined.

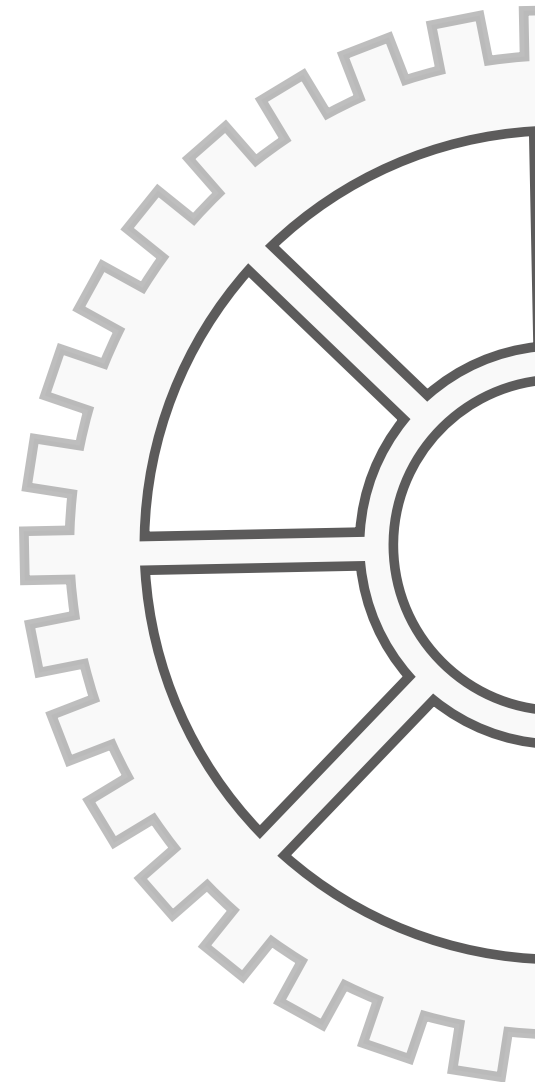
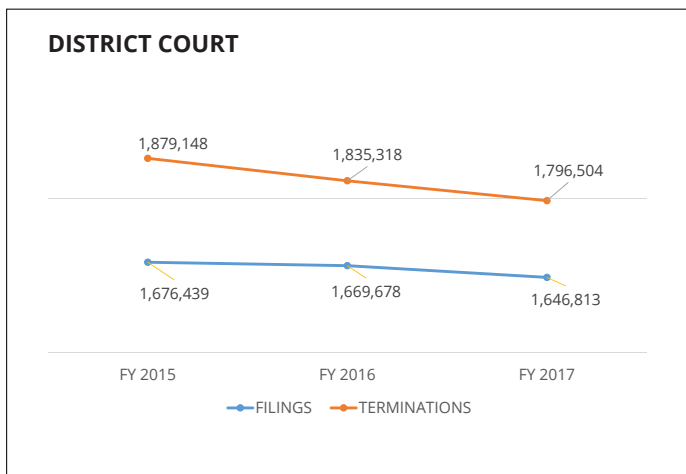
3. Statewide totals are reflective only of data reported to the Administrative Office of the Courts.

DISTRICT COURT

The District Court was created in 1970 by a constitutional amendment proposed by the legislature in 1969 and ratified in 1970. It is the trial court of limited jurisdiction in Maryland. The District Court has concurrent jurisdiction with circuit courts and handles all property owner and tenant cases. The District Court handles civil claims for amounts up to \$30,000, motor vehicle violations, misdemeanors, certain felonies, and peace and protective orders. Commissioners in the District Court determine probable cause and establish bail and conditions of release. Commissioners also issue interim peace and protective orders during hours when the court is closed.

There are 34 District Court locations, with at least one judge resident in each county and in Baltimore City. The District Court is divided into 12 geographical districts, each containing one or more political subdivisions. There are 116 judgeships, including the Chief Judge.

The following tables provide statistics on the workload in the District Court for Fiscal Year 2016.



**TABLE DC-1 DISTRICT COURT
MOTOR VEHICLE, CRIMINAL, AND CIVIL CASES FILED AND TERMINATED
Fiscal Years 2015 through 2017**

	FY 2015 FILED	FY 2015 TERMINATED	FY 2016 FILED	FY 2016 TERMINATED	FY 2017 FILED	FY 2017 TERMINATED
District 1	290,640	309,879	282,325	293,256	273,002	278,783
Baltimore City	290,640	309,879	282,325	293,256	273,002	278,783
District 2	82,416	99,620	77,946	92,647	80,393	92,428
Dorchester	12,201	14,455	11,225	13,524	12,185	14,376
Somerset	8,747	10,684	9,426	11,238	11,618	12,831
Wicomico	37,584	43,435	36,402	41,299	30,765	37,804
Worcester	23,884	31,046	20,893	26,586	25,825	27,417
District 3	67,532	81,100	75,508	76,096	66,629	83,425
Caroline	8,085	10,094	8,875	9,188	7,807	11,005
Cecil	28,401	31,723	33,053	32,257	30,333	34,782
Kent	4,476	5,663	4,987	4,995	4,777	5,793
Queen Anne's	13,185	16,333	13,647	14,236	11,169	13,889
Talbot	13,385	17,287	14,946	15,420	12,543	15,256
District 4	78,353	92,201	72,960	86,013	81,180	83,994
Calvert	18,883	22,893	16,953	20,607	17,204	18,301
Charles	39,728	46,194	37,461	43,912	43,128	44,140
St. Mary's	19,742	23,114	18,546	21,494	20,848	21,553
District 5	356,392	390,254	342,434	384,098	335,229	356,583
Prince George's	356,392	390,254	342,434	384,098	335,229	356,583
District 6	179,409	209,782	173,753	198,803	172,708	191,346
Montgomery	179,409	209,782	173,753	198,803	172,708	191,346
District 7	102,635	112,601	118,862	123,354	113,434	142,710
Anne Arundel	102,635	112,601	118,862	123,354	113,434	142,710
District 8	291,299	314,043	299,467	318,575	298,952	315,820
Baltimore	291,299	314,043	299,467	318,575	298,952	315,820
District 9	52,730	62,132	52,269	60,981	53,190	59,878
Harford	52,730	62,132	52,269	60,981	53,190	59,878
District 10	82,410	99,113	82,049	95,715	80,793	91,585
Howard	61,419	73,029	60,777	70,699	60,106	67,890
Carroll	20,991	26,084	21,272	25,016	20,687	23,695
District 11	68,726	79,705	68,035	76,725	69,604	77,159
Frederick	36,906	44,168	36,750	42,799	36,455	41,416
Washington	31,820	35,537	31,285	33,926	33,149	35,743
District 12	23,897	28,718	24,070	29,055	21,645	25,493
Allegany	14,610	17,274	14,940	18,113	14,344	16,617
Garrett	9,277	11,434	9,262	11,074	7,419	8,994
STATE TOTALS	1,676,429	1,879,138	1,669,810	1,835,450	1,646,877	1,796,622

**TABLE DC-2, DISTRICT COURT
MOTOR VEHICLE, CRIMINAL, AND CIVIL CASES FILED AND TERMINATED BY TYPE
Fiscal Year 2017**

FY 2017 MOTOR VEHICLE ¹		FY 2017 CRIMINAL ²		FY 2017 CIVIL ³		FY 2017 LANDLORD- TENANT	
	FILED	TERMINATED	FILED	TERMINATED	FILED	TERMINATED	FILED
District 1	52,596	58,341	26,544	26,999	49,804	49,385	144,058
Baltimore City	52,596	58,341	26,544	26,999	49,804	49,385	144,058
District 2	46,288	43,949	8,223	18,207	9,837	14,227	16,045
Dorchester	7,034	6,784	1,168	3,403	1,733	1,939	2,250
Somerset	8,391	7,926	739	1,942	805	1,280	1,683
Wicomico	11,986	11,410	2,981	7,392	4,608	7,812	11,190
Worcester	18,877	17,829	3,335	5,470	2,691	3,196	922
District 3	48,011	47,914	7,659	21,203	3,681	7,030	7,278
Caroline	5,219	5,134	1,114	3,848	533	1,082	941
Cecil	20,214	18,081	3,678	8,569	1,395	3,086	5,046
Kent	3,757	3,611	495	1,486	253	424	272
Queen Anne's	9,142	8,909	1,044	3,487	540	1,050	443
Talbot	9,679	9,479	1,328	3,813	960	1,388	576
District 4	40,764	39,701	8,379	11,967	16,548	16,837	15,489
Calvert	9,940	9,813	2,295	3,360	3,715	3,874	1,254
Charles	21,154	20,501	3,920	5,448	8,733	8,870	9,321
St. Mary's	9,670	9,387	2,164	3,159	4,100	4,093	4,914
District 5	98,176	117,013	19,610	23,154	62,602	61,575	154,841
Prince George's	98,176	117,013	19,610	23,154	62,602	61,575	154,841
District 6	73,135	91,182	14,742	16,922	39,004	37,415	45,827
Montgomery	73,135	91,182	14,742	16,922	39,004	37,415	45,827
District 7	50,970	48,838	15,154	40,131	7,612	14,043	39,698
Anne Arundel	50,970	48,838	15,154	40,131	7,612	14,043	39,698
District 8	57,243	74,013	14,515	15,566	58,298	57,345	168,896
Baltimore	57,243	74,013	14,515	15,566	58,298	57,345	168,896
District 9	22,477	28,815	4,601	5,286	10,388	10,053	15,724
Harford	22,477	28,815	4,601	5,286	10,388	10,053	15,724
District 10	37,906	48,635	5,917	6,528	14,232	13,684	22,738
Howard	27,002	34,775	3,435	3,765	9,295	8,976	20,374
Carroll	10,904	13,860	2,482	2,763	4,937	4,708	2,364
District 11	27,616	34,754	7,648	8,565	16,042	15,542	18,298
Frederick	17,665	22,257	3,921	4,275	7,512	7,527	7,357
Washington	9,951	12,497	3,727	4,290	8,530	8,015	10,941
District 12	13,124	16,269	3,740	4,327	3,443	3,559	1,338
Allegany	7,388	9,166	3,118	3,520	2,602	2,695	1,236
Garrett	5,736	7,103	622	807	841	864	220
STATE TOTALS	568,306	646,724	136,732	198,855	291,491	300,695	650,348

1. Includes DWI, serious, and non-serious traffic cases by incident (including cases prepaid before trial), as well as parking/red light requests for trial, Natural Resources citations, and Maryland Transit Administration citations.
2. Criminal filings include fugitive warrants.
3. Civil case filings are comprised of the following categories of filings: civil complaints, domestic violence case filings, peace order case filings, possession, miscellaneous petitions, aids of execution, municipal infractions, civil citations, emergency evaluations, forfeitures of contraband, and injunctions.

**TABLE DC-3 DISTRICT COURT
MOTOR VEHICLE CASES FILED AND PROCESSED
Fiscal Year 2017**

	PAYABLE, MUST APPEAR & SEC. 21-902 CASES				OTHER CASES ¹		TOTALS	
	FILED	TRIED ²	PAID ³	OTHER DISPOSITIONS ⁴	FILED	TERMINATED	FILED	TERMINATED
District 1	22,535	8,847	12,628	8,154	30,061	28,712	52,596	58,341
Baltimore City	22,535	8,847	12,628	8,154	30,061	28,712	52,596	58,341
District 2	44,620	9,372	26,629	6,480	1,668	1,468	46,288	43,949
Dorchester	6,348	1,618	3,843	852	686	471	7,034	6,784
Somerset	8,167	702	5,976	1,034	224	214	8,391	7,926
Wicomico	11,727	1,313	7,417	2,437	259	243	11,986	11,410
Worcester	18,378	5,739	9,393	2,157	499	540	18,877	17,829
District 3	46,213	7,537	31,094	4,970	1,798	1,613	48,011	47,914
Caroline	5,165	938	3,548	601	54	47	5,219	5,134
Cecil	19,354	1,693	13,391	2,181	860	816	20,214	18,081
Kent	3,646	571	2,562	400	111	78	3,757	3,611
Queen Anne's	8,736	1,626	5,676	1,277	406	330	9,142	8,909
Talbot	9,312	2,709	5,917	511	367	342	9,679	9,479
District 4	39,848	7,783	23,498	7,421	916	999	40,764	39,701
Calvert	9,753	2,483	5,651	1,487	187	192	9,940	9,813
Charles	20,682	4,788	12,101	3,082	472	530	21,154	20,501
St. Mary's	9,413	512	5,746	2,852	257	277	9,670	9,387
District 5	71,503	17,420	47,844	25,081	26,673	26,668	98,176	117,013
Prince George's	71,503	17,420	47,844	25,081	26,673	26,668	98,176	117,013
District 6	57,383	16,495	45,041	13,900	15,752	15,746	73,135	91,182
Montgomery	57,383	16,495	45,041	13,900	15,752	15,746	73,135	91,182
District 7	48,328	11,448	25,448	9,395	2,642	2,547	50,970	48,838
Anne Arundel	48,328	11,448	25,448	9,395	2,642	2,547	50,970	48,838
District 8	48,360	23,273	32,862	9,316	8,883	8,562	57,243	74,013
Baltimore	48,360	23,273	32,862	9,316	8,883	8,562	57,243	74,013
District 9	22,138	7,118	18,987	2,357	339	353	22,477	28,815
Harford	22,138	7,118	18,987	2,357	339	353	22,477	28,815
District 10	37,052	14,157	29,190	4,442	854	846	37,906	48,635
Howard	26,283	9,142	21,526	3,392	719	715	27,002	34,775
Carroll	10,769	5,015	7,664	1,050	135	131	10,904	13,860
District 11	26,635	6,730	23,024	3,978	981	1,022	27,616	34,754
Frederick	16,994	4,520	14,809	2,284	671	644	17,665	22,257
Washington	9,641	2,210	8,215	1,694	310	378	9,951	12,497
District 12	12,401	2,340	12,187	959	723	783	13,124	16,269
Allegany	7,192	1,543	6,757	641	196	225	7,388	9,166
Garrett	5,209	797	5,430	318	527	558	5,736	7,103
STATE TOTALS	477,016	132,520	328,432	96,453	91,290	89,319	568,306	646,724

1. Includes parking/red light requests for trial, natural resources citations, and Maryland Transit Administration citations.
2. Represents the number of incidents with the following verdict types: guilty, nolo contendere, not guilty/judgment of acquittal, not criminally responsible, and probation before judgment.
3. Represents the number of non-serious incidents in which all of the citations in the incident were paid before trial.
4. Represents the number of incidents with the following dispositions: nolle prosequi, stet, merge, jury trial prayed, forwarded to circuit court, forwarded to juvenile authorities, abated by death, dismissed, and incompetent to stand trial.

**TABLE DC-4 DISTRICT COURT
CRIMINAL CASES: MANNER OF DISPOSITION
Fiscal Year 2017**

	Guilty	Not Guilty	Probation Before Judgment	Forwarded to Circuit Court	Jury Trial Prayer	Nolle Prosequi	Stet	Dismissed	Other	Total
District 1	2,945	1,242	936	3,978	3,336	13,207	1,254	64	37	26,999
Baltimore City	2,945	1,242	936	3,978	3,336	13,207	1,254	64	37	26,999
District 2	3,265	492	1,109	3,002	765	6,002	3,014	477	81	18,207
Dorchester	825	60	109	486	155	1,294	425	39	10	3,403
Somerset	248	32	69	292	139	946	190	24	2	1,942
Wicomico	1,128	204	408	1,759	258	1,987	1,358	255	35	7,392
Worcester	1,064	196	523	465	213	1,775	1,041	159	34	5,470
District 3	1,968	233	543	3,965	4,059	6,876	2,745	645	169	21,203
Caroline	253	33	114	787	769	1,410	353	55	74	3,848
Cecil	627	39	157	1,284	1,839	2,698	1,547	335	43	8,569
Kent	104	19	26	307	340	502	166	15	7	1,486
Queen Anne's	584	22	115	525	786	1,081	355	7	12	3,487
Talbot	400	120	131	1,062	325	1,185	324	233	33	3,813
District 4	2,846	653	1,065	639	469	3,863	2,123	237	72	11,967
Calvert	744	197	258	106	95	1,000	866	73	21	3,360
Charles	1,171	367	606	449	260	1,817	698	51	29	5,448
St. Mary's	931	89	201	84	114	1,046	559	113	22	3,159
District 5	1,058	527	434	1,675	1,231	14,227	3,888	84	30	23,154
Prince George's	1,058	527	434	1,675	1,231	14,227	3,888	84	30	23,154
District 6	3,270	255	1,338	1,214	42	10,292	430	36	45	16,922
Montgomery	3,270	255	1,338	1,214	42	10,292	430	36	45	16,922
District 7	2,917	1,395	1,455	9,003	2,587	14,644	7,417	538	175	40,131
Anne Arundel	2,917	1,395	1,455	9,003	2,587	14,644	7,417	538	175	40,131
District 8	2,904	635	1,485	2,746	1,647	3,501	1,863	690	95	15,566
Baltimore	2,904	635	1,485	2,746	1,647	3,501	1,863	690	95	15,566
District 9	1,601	337	469	402	637	1,036	699	80	25	5,286
Harford	1,601	337	469	402	637	1,036	699	80	25	5,286
District 10	1,291	242	846	476	608	2,525	496	14	30	6,528
Howard	613	132	460	345	284	1,641	276	8	6	3,765
Carroll	678	110	386	131	324	884	220	6	24	2,763
District 11	1,929	232	702	937	730	3,049	933	9	44	8,565
Frederick	954	51	444	434	505	1,439	416	1	31	4,275
Washington	975	181	258	503	225	1,610	517	8	13	4,290
District 12	1,241	52	416	244	606	1,147	595	1	25	4,327
Allegany	991	47	299	219	591	841	511	1	20	3,520
Garrett	250	5	117	25	15	306	84	0	5	807
STATE TOTALS	27,235	6,295	10,798	28,281	16,717	80,369	25,457	2,875	828	198,855

**TABLE DC-5 DISTRICT COURT
DWI CASES FILED AND TERMINATED¹
Fiscal Years 2015 through 2017**

	FY 2015 Filed	FY 2015 Terminated	FY 2016 Filed	FY 2016 Terminated	FY 2017 Filed	FY 2017 Terminated
District 1	946	1,169	798	925	740	806
Baltimore City	946	1,169	798	925	740	806
District 2	1,465	2,092	1,530	2,088	1,678	1,808
Dorchester	134	160	158	198	188	193
Somerset	121	163	142	168	140	170
Wicomico	517	778	515	708	564	626
Worcester	693	991	715	1,014	786	819
District 3	1,088	1,194	1,301	1,567	1,138	1,021
Caroline	111	178	135	154	147	147
Cecil	461	350	500	633	452	367
Kent	111	172	139	142	97	96
Queen Anne's	218	250	274	364	202	189
Talbot	187	244	253	274	240	222
District 4	1,639	2,176	1,674	2,223	2,080	2,209
Calvert	557	762	552	694	679	674
Charles	742	922	773	1,018	899	1,011
St. Mary's	340	492	349	511	502	524
District 5	2,441	2,636	2,646	3,409	2,173	2,303
Prince George's	2,441	2,636	2,646	3,409	2,173	2,303
District 6	3,179	4,262	3,291	4,257	3,264	3,998
Montgomery	3,179	4,262	3,291	4,257	3,264	3,998
District 7	1,725	2,149	2,079	2,022	2,068	1,939
Anne Arundel	1,725	2,149	2,079	2,022	2,068	1,939
District 8	2,078	2,471	1,921	2,324	1,761	2,150
Baltimore	2,078	2,471	1,921	2,324	1,761	2,150
District 9	677	882	704	939	825	1,060
Harford	677	882	704	939	825	1,060
District 10	1,463	1,893	1,532	1,783	1,405	1,627
Howard	935	1,314	975	1,208	906	1,094
Carroll	528	579	557	575	499	533
District 11	1,081	1,235	1,120	1,250	1,235	1,384
Frederick	660	750	657	680	820	856
Washington	421	485	463	570	415	528
District 12	344	439	339	436	328	410
Allegany	220	271	205	247	214	223
Garrett	124	168	134	189	114	187
STATE TOTALS	18,126	22,598	18,935	23,223	18,695	20,715

1. DWI cases filed and terminated reflect the number of incidents, which may include multiple citations.

**TABLE DC-6 DISTRICT COURT
DWI CASES: MANNER OF DISPOSITION
Fiscal Year 2017**

	GUILTY	NOT GUILTY	PROB. BEFORE JDMNT.	DISMISSED	NOLLE PROSEQUI	STET	MERGED	JURY TRIAL PRAYER	OTHER	TOTAL
District 1	179	30	341	5	206	26	1	14	4	806
Baltimore City	179	30	341	5	206	26	1	14	4	806
District 2	677	38	774	5	176	66	0	47	25	1,808
Dorchester	67	3	62	1	51	4	0	4	1	193
Somerset	40	0	70	0	31	23	0	5	1	170
Wicomico	242	6	270	0	55	30	0	13	10	626
Worcester	328	29	372	4	39	9	0	25	13	819
District 3	262	34	388	2	204	69	3	44	15	1,021
Caroline	51	2	46	1	37	4	1	4	1	147
Cecil	45	8	144	0	89	46	0	28	7	367
Kent	31	4	31	0	16	12	0	2	0	96
Queen Anne's	62	2	67	1	37	6	0	9	5	189
Talbot	73	18	100	0	25	1	2	1	2	222
District 4	624	21	1,042	0	375	60	0	55	32	2,209
Calvert	204	4	315	0	100	22	0	15	14	674
Charles	225	14	543	0	155	26	0	35	13	1,011
St. Mary's	195	3	184	0	120	12	0	5	5	524
District 5	70	69	107	30	1,504	28	0	488	7	2,303
Prince George's	70	69	107	30	1,504	28	0	488	7	2,303
District 6	983	125	1,922	21	897	31	1	1	17	3,998
Montgomery	983	125	1,922	21	897	31	1	1	17	3,998
District 7	392	52	982	19	387	78	0	0	29	1,939
Anne Arundel	392	52	982	19	387	78	0	0	29	1,939
District 8	621	51	1,198	1	209	9	0	37	24	2,150
Baltimore	621	51	1,198	1	209	9	0	37	24	2,150
District 9	328	13	429	2	212	34	2	34	6	1,060
Harford	328	13	429	2	212	34	2	34	6	1,060
District 10	423	65	859	0	195	25	0	51	9	1,627
Howard	290	37	597	0	114	21	0	29	6	1,094
Carroll	133	28	262	0	81	4	0	22	3	533
District 11	314	14	772	2	226	3	0	40	13	1,384
Frederick	162	3	503	0	148	1	0	31	8	856
Washington	152	11	269	2	78	2	0	9	5	528
District 12	122	4	204	0	60	11	0	5	4	410
Allegany	63	1	124	0	23	5	0	5	2	223
Garrett	59	3	80	0	37	6	0	0	2	187
STATE TOTALS	4,995	516	9,018	87	4,651	440	7	816	185	20,715

**TABLE DC-7, DISTRICT COURT
DOMESTIC VIOLENCE CASES FILED AND TERMINATED
Fiscal Years 2015 through 2017**

	FY 2015 Filed¹	FY 2015 Terminated²	FY 2016 Filed	FY 2016 Terminated	FY 2017 Filed	FY 2017 Terminated
District 1	4,433	4,273	5,237	5,031	5,936	5,737
Baltimore City	4,433	4,273	5,237	5,031	5,936	5,737
District 2	916	852	1,002	938	1,018	660
Dorchester	163	156	182	171	159	76
Somerset	71	67	105	95	135	79
Wicomico	477	435	500	465	527	372
Worcester	205	194	215	207	197	133
District 3	975	874	1,062	947	1,164	711
Caroline	146	128	174	149	173	52
Cecil	494	439	538	469	550	341
Kent	66	62	58	48	87	34
Queen Anne's	162	147	164	157	168	147
Talbot	107	98	128	124	186	137
District 4	1,476	1,324	1,792	1,559	1,926	1,727
Calvert	321	271	388	332	418	364
Charles	705	630	815	718	848	776
St. Mary's	450	423	589	509	660	587
District 5	5,159	4,784	6,225	5,748	6,668	6,273
Prince George's	5,159	4,784	6,225	5,748	6,668	6,273
District 6	2,331	2,036	2,709	2,388	2,997	2,618
Montgomery	2,331	2,036	2,709	2,388	2,997	2,618
District 7	2,284	3,279	2,434	2,035	2,397	1,897
Anne Arundel	2,284	3,279	2,434	2,035	2,397	1,897
District 8	3,255	3,137	3,696	3,577	3,619	3,480
Baltimore	3,255	3,137	3,696	3,577	3,619	3,480
District 9	703	638	839	766	801	737
Harford	703	638	839	766	801	737
District 10	909	833	1,044	955	1,166	1,091
Howard	519	468	648	598	698	666
Carroll	390	365	396	357	468	425
District 11	1,958	1,830	1,890	1,768	2,070	1,964
Frederick	723	680	687	634	708	662
Washington	1,235	1,150	1,203	1,134	1,362	1,302
District 12	485	482	481	465	546	535
Allegany	366	371	360	349	374	365
Garrett	119	111	121	116	172	170
STATE TOTALS	24,884	24,342	28,411	26,177	30,308	27,430

1. Filings include child abuse, domestic violence, and vulnerable adult cases filed.
2. Terminations represent the total number of final protective orders granted, denied and dismissed; temporary orders denied and dismissed; and interim orders denied.

**TABLE DC-8, DISTRICT COURT
PEACE ORDER CASES FILED AND TERMINATED
Fiscal Years 2015 through 2017**

	FY 2015 Filed	FY 2015 Terminated¹	FY 2016 Filed	FY 2016 Terminated¹	FY 2017 Filed	FY 2017 Terminated¹
District 1	3,784	3,772	3,275	3,266	2,808	2,798
Baltimore City	3,784	3,772	3,275	3,266	2,808	2,798
District 2	723	739	765	766	667	450
Dorchester	169	181	198	200	125	54
Somerset	67	66	89	88	92	69
Wicomico	346	352	337	333	313	238
Worcester	141	140	141	145	137	89
District 3	571	560	520	515	465	268
Caroline	85	79	80	72	106	24
Cecil	218	217	205	208	151	95
Kent	61	59	34	36	41	20
Queen Anne's	115	113	116	112	95	86
Talbot	92	92	85	87	72	43
District 4	1,255	1,247	1,197	1,190	1,343	1,295
Calvert	270	266	241	239	284	265
Charles	708	705	593	591	608	601
St. Mary's	277	276	363	360	451	429
District 5	4,087	4,024	3,954	3,982	3,780	3,770
Prince George's	4,087	4,024	3,954	3,982	3,780	3,770
District 6	2,293	2,222	2,141	2,106	2,237	2,178
Montgomery	2,293	2,222	2,141	2,106	2,237	2,178
District 7	1,844	1,631	1,732	1,705	1,674	1,349
Anne Arundel	1,844	1,631	1,732	1,705	1,674	1,349
District 8	2,492	2,462	2,470	2,205	2,258	2,221
Baltimore	2,492	2,462	2,470	2,205	2,258	2,221
District 9	561	559	574	573	513	500
Harford	561	559	574	573	513	500
District 10	766	764	859	850	799	788
Howard	384	379	431	428	418	417
Carroll	382	385	428	422	381	371
District 11	1,291	1,237	1,318	1,315	1,118	1,111
Frederick	563	555	573	573	479	469
Washington	728	682	745	742	639	642
District 12	270	263	264	263	293	295
Allegany	206	202	191	188	204	206
Garrett	64	61	73	75	89	89
STATE TOTALS	19,937	19,480	19,069	18,736	17,955	17,023

1. Peace Order Cases Terminated equal the number of interim orders denied, plus temporary orders denied and dismissed, plus final peace orders granted, denied and dismissed.

**TABLE DC-9 DISTRICT COURT
DOMESTIC VIOLENCE DISPOSITIONS
Fiscal Year 2017**

	Cases Filed	Transfers to Circuit Court	Interim Orders Granted	Temporary Orders Granted	Temporary Orders Reissued	Protective Orders Granted	Appeals
District 1	5,936	115	3,301	3,095	5,557	1,141	49
Baltimore City	5,936	115	3,301	3,095	5,557	1,141	49
District 2	1,018	33	318	670	169	325	12
Dorchester	159	6	60	108	36	45	2
Somerset	135	6	41	85	15	43	1
Wicomico	527	20	173	347	108	158	6
Worcester	197	1	44	130	10	79	3
District 3	1,164	29	356	767	71	282	30
Caroline	173	6	56	107	7	49	6
Cecil	550	14	140	420	0	132	15
Kent	87	0	16	42	1	19	0
Queen Anne's	168	5	57	100	43	45	5
Talbot	186	4	87	98	20	37	4
District 4	1,926	119	986	1,076	324	536	48
Calvert	418	27	184	258	67	121	13
Charles	848	44	495	435	89	233	28
St. Mary's	660	48	307	383	168	182	7
District 5	6,668	279	3,670	4,292	3,069	1,992	83
Prince George's	6,668	279	3,670	4,292	3,069	1,992	83
District 6	2,997	7	1,382	1,798	899	1,060	70
Montgomery	2,997	7	1,382	1,798	899	1,060	70
District 7	2,397	41	996	1,344	376	552	41
Anne Arundel	2,397	41	996	1,344	376	552	41
District 8	3,619	39	1,345	2,405	3,683	929	69
Baltimore	3,619	39	1,345	2,405	3,683	929	69
District 9	801	56	381	511	162	317	10
Harford	801	56	381	511	162	317	10
District 10	1,166	55	615	811	261	370	20
Howard	698	29	368	472	181	202	1
Carroll	468	26	247	339	80	168	19
District 11	2,070	97	879	1,380	373	686	29
Frederick	708	31	287	525	123	277	20
Washington	1,362	66	592	855	250	409	9
District 12	546	7	235	349	99	182	8
Allegany	374	7	171	236	51	123	4
Garrett	172	0	64	113	48	59	4
STATE TOTALS	30,308	877	14,464	18,498	15,043	8,372	469

**TABLE DC-10, DISTRICT COURT
PEACE ORDER DISPOSITIONS
Fiscal Year 2017**

	Cases Filed	Interim Orders Granted	Temporary Orders Granted	Peace Orders Granted	Appeals
District 1	2,808	1,493	2,217	489	13
Baltimore City	2,808	1,493	2,217	489	13
District 2	667	130	498	241	3
Dorchester	125	27	85	61	0
Somerset	92	23	71	41	0
Wicomico	313	65	247	103	2
Worcester	137	15	95	36	1
District 3	465	77	264	125	8
Caroline	106	17	50	34	0
Cecil	151	33	107	36	4
Kent	41	4	12	5	0
Queen Anne's	95	12	58	33	0
Talbot	72	11	37	17	4
District 4	1,343	504	954	439	12
Calvert	284	114	170	86	3
Charles	608	222	450	204	5
St. Mary's	451	168	334	149	4
District 5	3,780	1,737	3,390	1,164	8
Prince George's	3,780	1,737	3,390	1,164	8
District 6	2,237	753	1,519	749	18
Montgomery	2,237	753	1,519	749	18
District 7	1,674	558	948	419	18
Anne Arundel	1,674	558	948	419	18
District 8	2,258	670	2,645	609	0
Baltimore	2,258	670	2,645	609	0
District 9	513	176	412	211	7
Harford	513	176	412	211	7
District 10	799	299	642	269	1
Howard	418	174	341	119	0
Carroll	381	125	301	150	7
District 11	1,118	306	1,140	435	11
Frederick	479	92	532	171	8
Washington	639	214	608	264	3
District 12	293	101	281	119	0
Allegany	204	67	180	81	0
Garrett	89	34	101	38	0
STATE TOTALS	17,955	6,804	14,910	5,269	105

Prepared by:

Court Operations Department
Administrative Office of the Courts
2001 E/F Commerce Park Dr.
Annapolis, Maryland 21401
(410) 260-1737
Maryland Relay Service (TT/Voice) 1-800-735-2258
mdcourts.gov

4/2018

