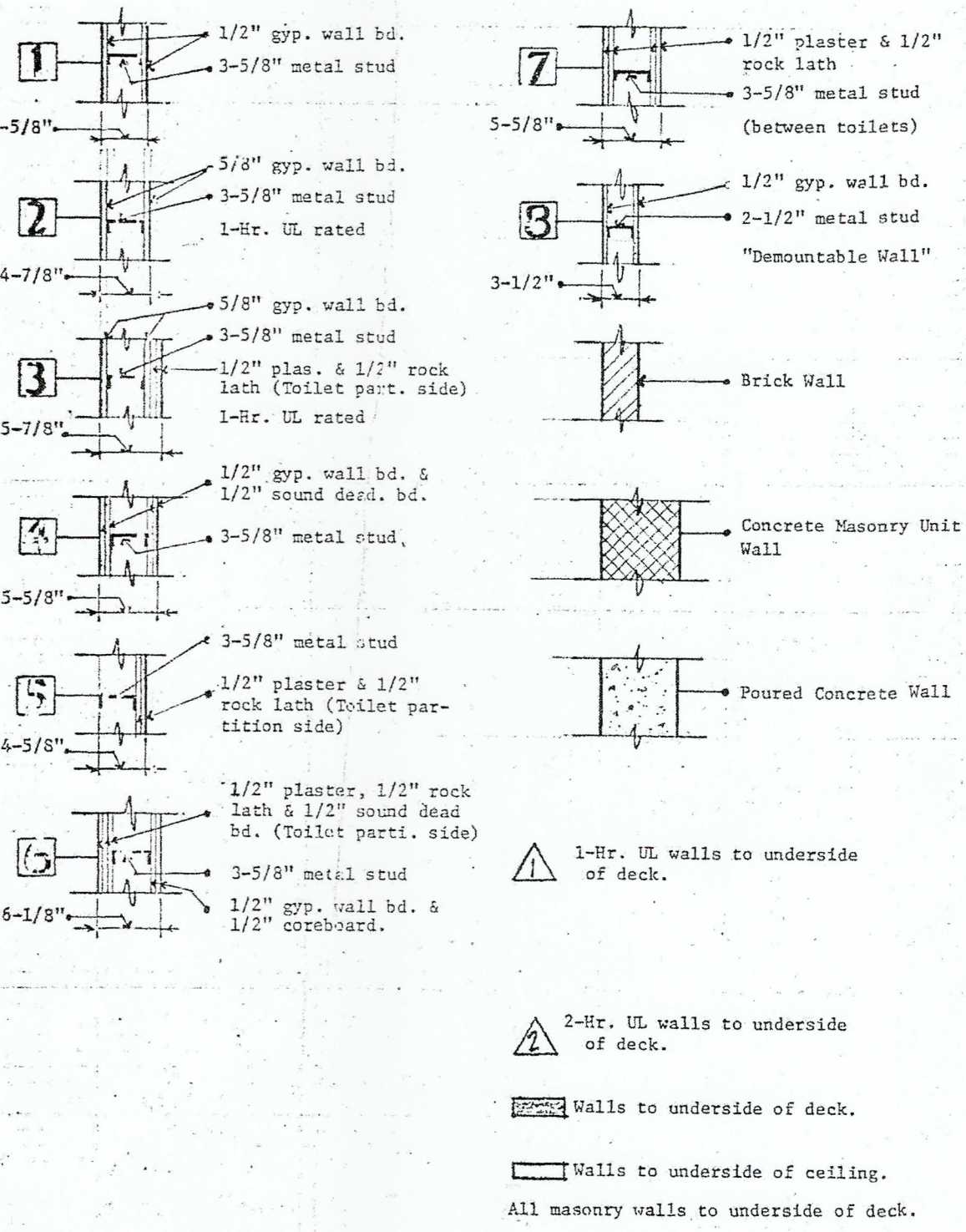
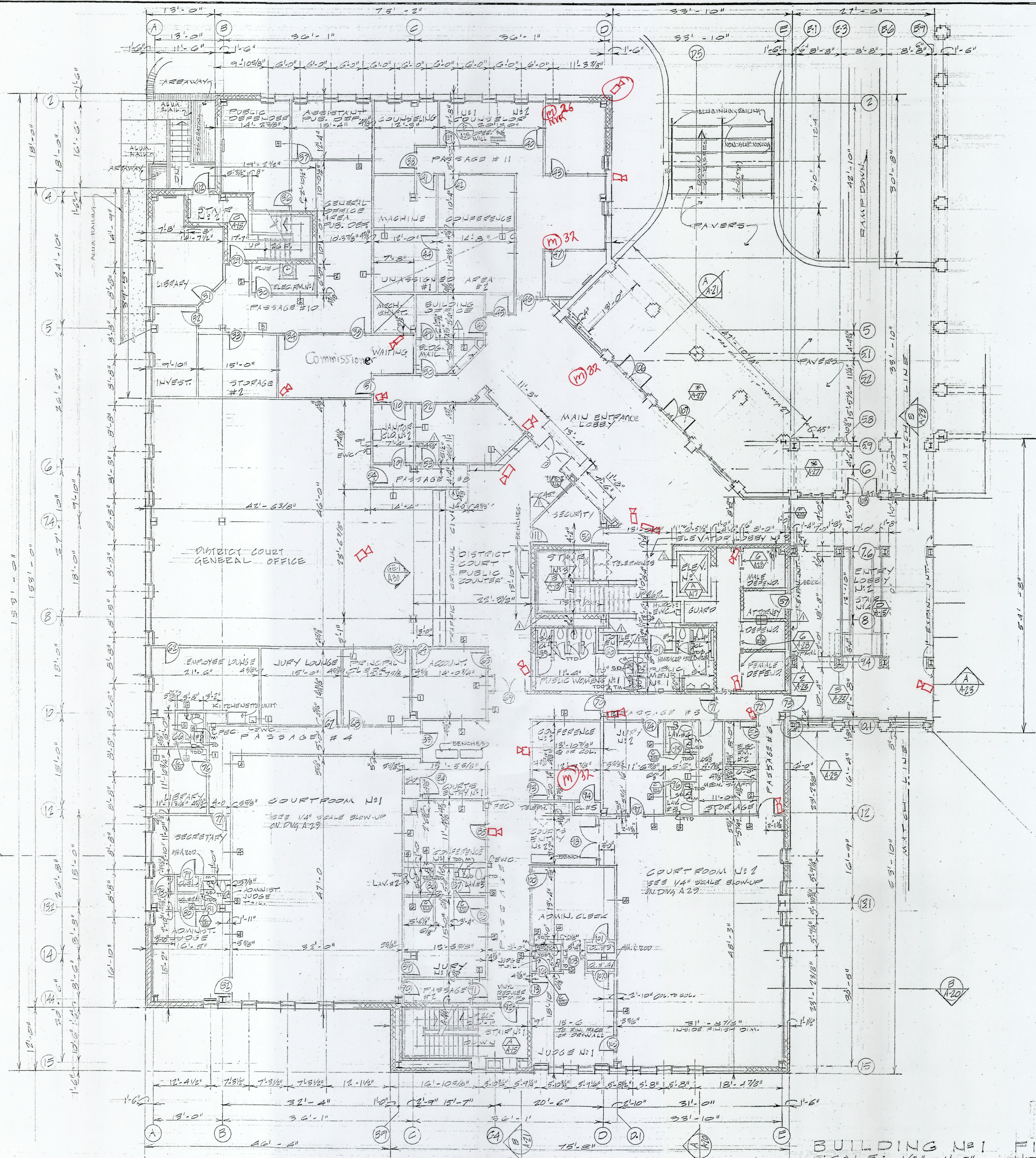
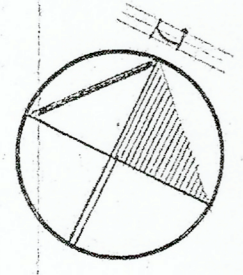


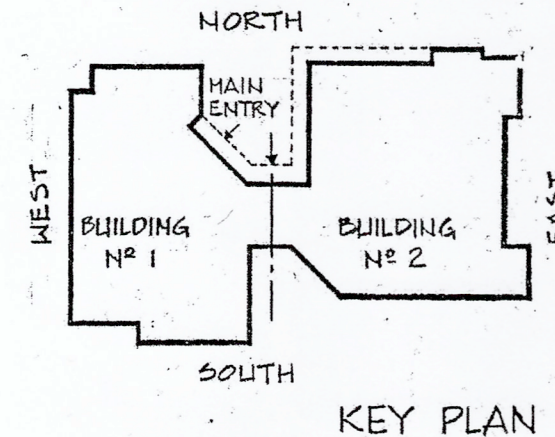
WALL SCHEDULE



GENERAL NOTES:
 DIMENSIONS FOR ALL DEMOUNTABLE PARTITIONS ARE TO CENTERLINES OF THESE PARTITIONS.
 ALL OTHER DIMENSIONS ARE TO FINISH FACE OF MASONRY.
 DIMENSIONS AT STAIRS ARE TO NOMINAL FACE OF MASONRY DIMENSION UNLESS OTHERWISE INDICATED.
 ALL VERTICAL PIPING AND DUCT GRASSES SHALL HAVE METAL STUDS AND GYPSUM WALLBOARD ENCLOSURE.
 ALL TOILET ROOMS SHALL RECEIVE THE FOLLOWING:
 S.D. = SOAP DISPENSER
 T.T.D. = TOILET TISSUE DISPENSER
 T.D.D. = TOWEL DISPENSER AND DISPOSAL
 M. = MIRROR - TILTED MIRROR AT HANDICAPPED LAVATORY
 G.B. = GRAB BARS - HANDICAPPED STALLS



Fixed Camera
 PTZ camera
 monitor w/size



SCALE: 1/8" = 1'-0"
 0 5 10 25

BUILDING No. 1
 SCALE: 1/8" = 1'-0"
FIRST FLOOR PLAN
 NOTE: SEE DWG. NO. 013 FOR REVISIONS TO THIS PLAN.

SMEALLIE, ORRICK & JANKA LTD.
 ARCHITECTS · PLANNERS
 5820 YORK ROAD
 BALTIMORE, MARYLAND 21212

WHITNEY, BAILEY, COX & MAGNANI · CONSULTING ENGINEERS
 GREEN SPRING STATION, SUITE 311 · 2360 WEST JOPPA ROAD · LUTHERVILLE, MD. 21093

GIPE ASSOCIATES · CONSULTANTS
 201 PADONIA ROAD, WEST · TIMONIUM, MD. 21093

DAFT · McCUNE · WALKER, INC. · LANDSCAPE ARCHITECTS, PLANNERS
 530 EAST JOPPA ROAD · TOWSON, MD. 21284

APPROVED: [Signature]
 APPROVED: [Signature]
 REVISION: [Signature]

REVISION: [Text]

ELKTON DISTRICT COURT / MULTI SERVICE CENTER
 MAIN STREET
 ELKTON, MARYLAND

DATE: 11.20.80
 JOB NO: BC-7330
 DRAWING NO. OF: A-3