

**Maryland Judiciary  
FY 2015 Statewide Caseflow Assessment**

**Supplemental Analysis**

**Civil Foreclosure Case Terminations**

**Circuit Courts**



**Administrative Office of the Courts**

May 2016

# FY 2015 Maryland Judiciary Statewide Caseflow Assessment

## Supplemental Analysis: Civil Foreclosure Case Terminations in the Circuit Courts

### Supplemental Analysis

This supplemental analysis of foreclosure case processing performance was completed at the request of the Case Management Subcommittee and the Maryland Judicial Council. As per a decision of the Council, circuit court foreclosure terminations were included in the main circuit court Civil General case samples in the FY 2015 statewide Caseflow Assessment.

This analysis examines the following aspects of foreclosure case processing performance: (1) within-standard performance, (2) average case processing times, (3) distribution of over-standard cases, and (4) performance by disposition type. Tables 7 through 10 on pages 10 through 13 provide foreclosure and civil non-foreclosure case processing performance by circuit court jurisdiction for the past several fiscal years.

#### Within-Standard Performance

- Statewide, foreclosure cases represented 60% of the total Civil General sample in FY 2015.<sup>1</sup> Foreclosure cases were closed 88% within-standard statewide in FY 2015 (unweighted), which was a 1% decrease in statewide within-standard performance from FY 2014, but was higher than performance observed in both Fiscal Years 2011 (87% within-standard statewide) and 2012 (73% within-standard statewide).
  - Twelve circuit court jurisdictions showed either no change or improved foreclosure case processing performance in Fiscal Year 2015 over Fiscal Year 2014. This between-year variance was similar to that observed between Fiscal Years 2013 and 2014, in which 11 circuit court jurisdictions either maintained or improved foreclosure case processing performance. Moreover, this follows a general pattern of year-to-year variance in foreclosure case processing performance among circuit court jurisdictions; for example, all but one but one jurisdiction showed improved foreclosure case processing performance in Fiscal Year 2013 over Fiscal Year 2012, and the one jurisdiction with decreased performance only dropped by 1% during this period. Conversely, between Fiscal Years 2011 and 2012, all but two circuit court jurisdictions showed decreased foreclosure case processing performance.
- Statewide within-standard case processing performance among civil non-foreclosure cases increased by 2% between Fiscal Years 2014 and 2015, at 95% within-standard statewide on an unweighted basis. Civil non-foreclosure cases were 94% within-standard statewide each year between Fiscal Years 2009 and 2013.

---

<sup>1</sup> The Circuit Court for Anne Arundel County was excluded from the FY 2015 analysis of case processing performance.

- Nineteen circuit court jurisdictions showed either no change or improved civil non-foreclosure within-standard case processing performance between Fiscal Years 2014 and 2015. For those jurisdictions that showed improved civil non-foreclosure performance, the largest increase was 11%.
- Viewed aggregated by jurisdiction size, small- and medium-sized circuit court jurisdictions performed at the highest rate among foreclosure cases (90% within-standard) in FY 2015, although that was a three-year low in foreclosure performance among small jurisdictions. Foreclosure case processing performance rose by 1% among large circuit court jurisdictions, collectively, between Fiscal Years 2014 and 2015, although only four of five large circuit court jurisdictions were subject to the FY 2015 analysis. Three large circuit court jurisdictions showed improved foreclosure case processing performance between Fiscal Years 2014 and 2015.
- Civil non-foreclosure performance increased by 2% statewide between Fiscal Years 2014 and 2015, at 95% within-standard (unweighted). Each jurisdiction size tier showed improved performance, with the largest improvement occurring among large circuit court jurisdictions (at 95% within-standard; a 4% increase over FY 2014).

*Table 1. Percentage of Cases Closed Within the 18-Month Time Standard: All Civil Cases, Non-Foreclosure Cases (Non-FC), Foreclosure Cases (FC), Fiscal Years 2011 through 2015 (Unweighted)*

Jurisdiction Size	FY 2011*		FY 2012*		FY 2013			FY 2014			FY 2015			FY 14-15 Change	
	Non-FC	FC	Non-FC	FC	All Civil Cases	Non-FC	FC	All Civil Cases	Non-FC	FC	All Civil Cases	Non-FC	FC	Non-FC	FC
<b>Small</b>	96%	92%	96%	82%	95%	95%	93%	93%	94%	91%	92%	96%	90%	2%	-1%
<b>Medium</b>	95%	91%	94%	79%	93%	95%	92%	92%	94%	90%	92%	95%	90%	1%	0%
<b>Medium-Large</b>	94%	86%	94%	76%	92%	93%	90%	91%	94%	89%	89%	95%	85%	1%	-4%
<b>Large</b>	93%	82%	91%	64%	92%	94%	88%	89%	91%	88%	92%	95%	89%	4%	1%
<b>Statewide</b>	<b>94%</b>	<b>87%</b>	<b>94%</b>	<b>73%</b>	<b>93%</b>	<b>94%</b>	<b>91%</b>	<b>91%</b>	<b>93%</b>	<b>89%</b>	<b>91%</b>	<b>95%</b>	<b>88%</b>	<b>2%</b>	<b>-1%</b>

\*Foreclosure cases were excluded from the main Circuit Civil samples in Fiscal Years 2011 and 2012.

#### Average Case Processing Times

- The statewide overall average case processing time among foreclosure cases, at 352 days in FY 2015, was an increase of 22 days over FY 2014 and 135 days more than the statewide overall average case processing time among civil non-foreclosure cases. While higher than both Fiscal Years 2013 and 2014, the average statewide foreclosure case time was still lower than that recorded in both Fiscal Years 2011 (357 days) and 2012 (439 days).

- The statewide civil non-foreclosure average case time decreased by 10 days in FY 2015 over FY 2014, at 217 days, which was a five-year low.
- Large jurisdictions posted the biggest decrease in average civil non-foreclosure case time between Fiscal Years 2014 and 2015 (decreasing by 24 days), followed by medium jurisdictions (a decrease of 12 days). Civil non-foreclosure overall average case times rose slightly (by seven days) between Fiscal Years 2014 and 2015 in medium-large sized circuit court jurisdictions.
- Overall average foreclosure case processing times increased in 18 circuit court jurisdictions between Fiscal Years 2014 and 2015, which was similar to the performance difference observed between Fiscal Years 2013 and 2014, during which time overall average foreclosure case times rose in 17 jurisdictions. This follows all but two circuit court jurisdictions showing decreased overall average case processing times among foreclosure cases between Fiscal Years 2012 and 2013. The overall average case time among civil non-foreclosure cases rose in 11 circuit court jurisdictions in FY 2015 over FY 2014.

*Table 2. Average Case Processing Time, All Cases: All Civil Cases, Non-Foreclosure Cases (Non-FC), Foreclosure Cases (FC), Fiscal Years 2011 through 2015 (Unweighted)*

Jurisdiction Size	FY 2011*		FY 2012*		FY 2013			FY 2014			FY 2015			FY 14-15 Change	
	Non-FC	FC	Non-FC	FC	All Civil Cases	Non-FC	FC	All Civil Cases	Non-FC	FC	All Civil Cases	Non-FC	FC	Non-FC	FC
<b>Small</b>	190	305	179	361	223	184	272	258	185	304	273	177	322	-8	18
<b>Medium</b>	210	321	220	394	250	212	306	279	228	321	293	216	345	-12	24
<b>Medium-Large</b>	244	395	222	417	273	237	328	288	219	341	315	226	378	7	37
<b>Large</b>	248	381	262	515	285	246	344	311	264	357	308	240	366	-24	9
<b>Statewide</b>	<b>229</b>	<b>357</b>	<b>228</b>	<b>439</b>	<b>260</b>	<b>223</b>	<b>315</b>	<b>284</b>	<b>227</b>	<b>330</b>	<b>298</b>	<b>217</b>	<b>352</b>	<b>-10</b>	<b>22</b>

\*Foreclosure cases were excluded from the main Circuit Civil samples in Fiscal Years 2011 and 2012.

- Statewide within-standard average case time among foreclosure cases continued to be higher than that of civil non-foreclosure cases in FY 2015 (by 119 days), and increased by 25 days over FY 2014 results. Within-standard average foreclosure case times rose in each of the size classifications in FY 2015 over FY 2014. Civil non-foreclosure within-standard average case processing time rose by five days statewide between Fiscal Years 2014 and 2015, and also increased in all but the small jurisdiction size tier during this period.
- Within-standard civil non-foreclosure average case times increased in 14 jurisdictions between Fiscal Years 2014 and 2015. This contrasts with performance changes observed between Fiscal Years 2013 and 2014, during which time within-standard civil non-

foreclosure average case times decreased in 16 circuit court jurisdictions. Within-standard civil non-foreclosure average case times rose in all but one circuit court jurisdiction in the small jurisdiction size tier in FY 2015 over FY 2014.

*Table 3. Average Case Processing Time among Cases Closed within Standard: All Civil Cases, Non-Foreclosure Cases (Non-FC), Foreclosure Cases (FC), Fiscal Years 2011 through 2015 (Unweighted)*

Jurisdiction Size	FY 2011*		FY 2012*		FY 2013			FY 2014			FY 2015			FY 2014-15 Change	
	Non-FC	FC	Non-FC	FC	All Civil Cases	Non-FC	FC	All Civil Cases	Non-FC	FC	All Civil Cases	Non-FC	FC	Non-FC	FC
<b>Small</b>	149	272	156	243	190	155	234	217	149	261	235	149	283	0	22
<b>Medium</b>	185	282	188	299	218	183	270	234	181	279	255	191	300	10	21
<b>Medium-Large</b>	188	320	187	311	232	200	284	244	186	292	263	192	320	6	28
<b>Large</b>	211	312	203	310	236	209	280	244	202	286	266	204	323	2	37
<b>Statewide</b>	<b>188</b>	<b>299</b>	<b>188</b>	<b>299</b>	<b>221</b>	<b>189</b>	<b>269</b>	<b>235</b>	<b>181</b>	<b>280</b>	<b>255</b>	<b>186</b>	<b>305</b>	<b>5</b>	<b>25</b>

\*Foreclosure cases were excluded from the main Circuit Civil samples in Fiscal Years 2011 and 2012.

- The statewide over-standard average case time among foreclosure cases in FY 2015 was 706 days, which is a reduction of 52 days from FY 2014 and a five-year low. Twelve circuit court jurisdictions showed decreased over-standard average case times among foreclosure cases in FY 2015 over FY 2014. Over-standard average foreclosure case times fell, collectively, among small, medium-large and large jurisdictions in FY 2015 over FY 2014, but rose by 37 days among medium jurisdictions during this period.
- Among civil non-foreclosure cases, the statewide over-standard average case time decreased by 53 days between Fiscal Years 2014 and 2015, at 804 days (98 days higher than the same measure for foreclosure cases in FY 2015). Despite this finding of higher civil non-foreclosure average case times compared to foreclosure cases in FY 2015, there were over three times as many over-standard foreclosure cases in the statewide Civil General sample in FY 2015 (726) compared to civil non-foreclosure cases (207). Due to the relatively smaller number of over-standard civil non-foreclosure cases, fewer cases with significantly higher average case times (“outliers”) have a greater effect on statewide measures.

*Table 4. Average Case Processing Time among Cases Closed over Standard: All Civil Cases, Non-Foreclosure Cases (Non-FC), Foreclosure Cases (FC), Fiscal Years 2011 through 2015 (Unweighted)*

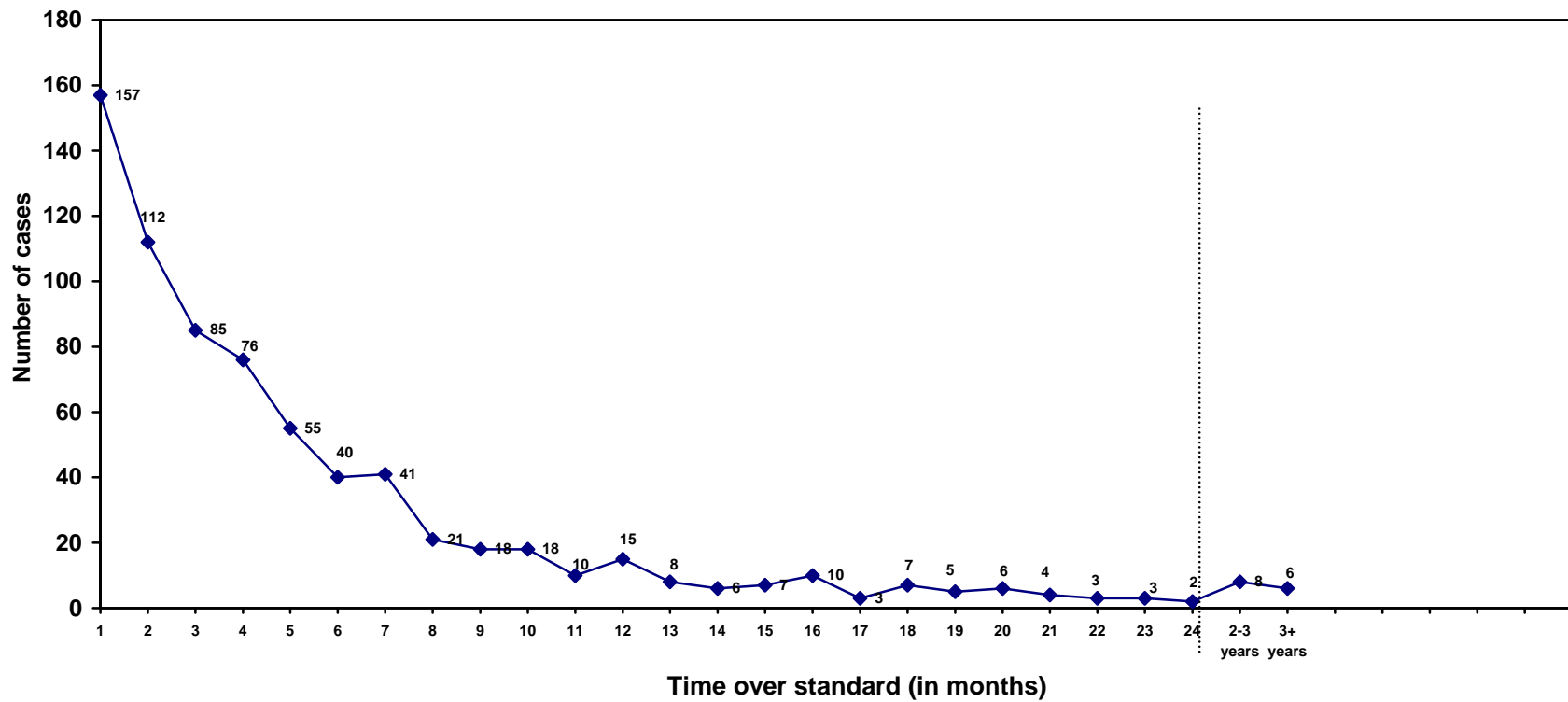
Jurisdiction Size	FY 2011*		FY 2012*		FY 2013			FY 2014			FY 2015			FY 2014-15 Change	
	Non-FC	FC	Non-FC	FC	All Civil Cases	Non-FC	FC	All Civil Cases	Non-FC	FC	All Civil Cases	Non-FC	FC	Non-FC	FC
<b>Small</b>	1,291	694	757	908	794	772	814	760	759	761	699	856	668	97	-93
<b>Medium</b>	705	729	748	763	716	714	717	772	948	686	719	704	723	-244	37
<b>Medium-Large</b>	1,091	846	759	752	745	751	739	744	768	734	730	812	708	44	-26
<b>Large</b>	746	704	888	872	816	833	803	877	897	863	771	883	724	-14	-139
<b>Statewide</b>	<b>906</b>	<b>758</b>	<b>805</b>	<b>821</b>	<b>763</b>	<b>763</b>	<b>763</b>	<b>791</b>	<b>857</b>	<b>758</b>	<b>728</b>	<b>804</b>	<b>706</b>	<b>-53</b>	<b>-52</b>

\*Foreclosure cases were excluded from the main Circuit Civil samples in Fiscal Years 2011 and 2012.

#### Distribution of Over-Standard Foreclosure Cases

- Figure 1 shows the distribution of over-standard foreclosure cases in FY 2015. It took approximately 3.1 months past the 18-month time standard for half of over-standard foreclosure cases to close statewide in FY 2015 (compared to 4.4 months in FY 2014), and 22% of over-standard foreclosure cases closed within one-month past the time standard (compared to 17% in FY 2014).
- Over-standard civil non-foreclosure cases closed at similar rates past the 18-month Civil General time standard in FY 2015 when compared to foreclosure cases, though taking slightly longer. It took approximately 4.7 months past the time standard for half of the over-standard civil non-foreclosure cases to close in FY 2015. The FY 2015 distribution of over-standard civil non-foreclosure cases is provided in Figure 2.

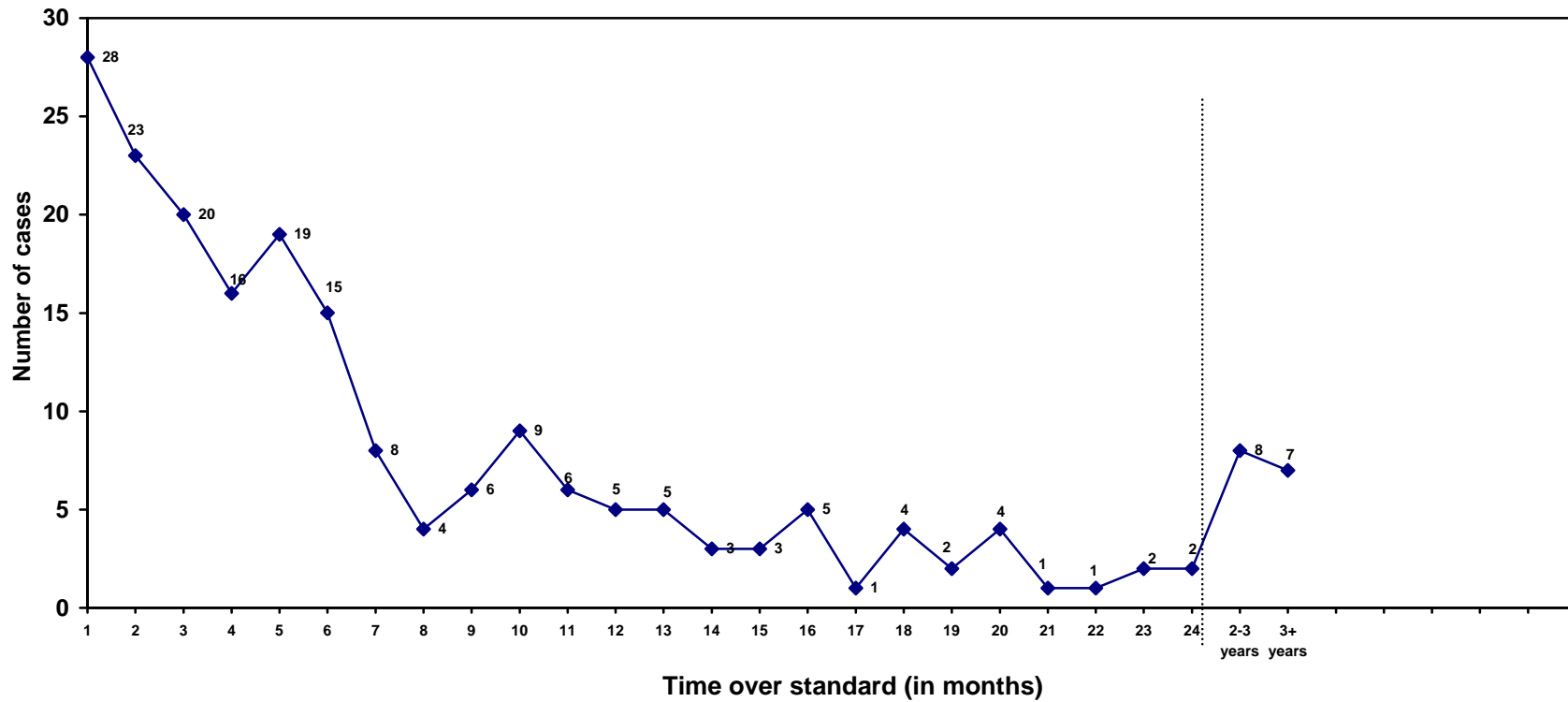
**Figure 1. Distribution of Over-Standard Foreclosure Cases (N=726) by the Time beyond the 548-Day Time Standard, FY 2015**



- The average case processing time (unweighted)
  - Overall: 352 days
  - Within-standard cases: 305 days
  - Over-standard cases: 706 days

\*The aggregate percent of cases closing (just) over their respective time standards are **not** weighted; therefore, caution should be used when generalizing this information to the statewide level.

**Figure 2. Distribution of Over-Standard Non-Foreclosure Cases (N=207) by the Time beyond the 548-Day Time Standard, FY 2015**



- The average case processing time (unweighted)
  - Overall: 217 days
  - Within-standard cases: 186 days
  - Over-standard cases: 804 days

\*The aggregate percent of cases closing (just) over their respective time standards are **not** weighted; therefore, caution should be used when generalizing this information to the statewide level.



## Performance by Disposition Type

- Examining foreclosure case processing performance by disposition type offers some insight as to whether certain case outcomes tend to consistently take more or less time to reach. This analysis is limited mainly by potential variance in the entry of correct disposition type identifiers in the source systems and the extent that disposition type identifiers may be used in varying ways among jurisdictions. For example, evidence was found of orders for dismissal being coded variably as a general dismissal or as a decree or order (of dismissal).
- Foreclosure cases closed by a decree or order<sup>2</sup> were again the most common in FY 2015, proportionally, at 67% of the statewide sample. Foreclosure cases that were dismissed in some fashion decreased from 28% of the sample in FY 2014 to 24% of the sample in FY 2015.

*Table 5: Foreclosure Case Processing Performance by Disposition Type, Fiscal Years 2012 through 2015*

Disposition Type	FY 2012				FY 2013				FY 2014				FY 2015			
	Disposition Type Frequency		Within-Standard Cases		Disposition Type Frequency		Within-Standard Cases		Disposition Type Frequency		Within-Standard Cases		Disposition Type Frequency		Within-Standard Cases	
	N	% of all cases	N	% WST	N	% of all cases	N	% WST	N	% of all cases	N	% WST	N	% of all cases	N	% WST
Decree/Order	3,578	49%	2,775	78%	2,424	59%	2,228	92%	3,834	64%	3,511	92%	4,133	67%	3,668	89%
Dismissed—Lack of Prosecution or Service	1,091	15%	691	63%	237	6%	179	76%	355	6%	206	58%	256	4%	206	80%
Other Dismissals*	2,055	28%	1,482	72%	1,038	25%	963	93%	1,337	22%	1,251	94%	1,257	20%	1,175	93%
Stipulation/Settlement	109	1%	94	86%	94	2%	91	97%	102	2%	99	97%	50	1%	48	96%
Administrative Close	179	2%	112	63%	86	2%	78	91%	134	2%	104	78%	233	4%	167	72%
Other Dispositions**	333	5%	219	66%	235	6%	196	83%	211	4%	173	82%	260	4%	199	77%
<b>Totals</b>	<b>7,345</b>	<b>100%</b>	<b>5,373</b>	<b>73%</b>	<b>4,114</b>	<b>100%</b>	<b>3,735</b>	<b>91%</b>	<b>5,973</b>	<b>100%</b>	<b>5,344</b>	<b>89%</b>	<b>6,189</b>	<b>100%</b>	<b>5,463</b>	<b>88%</b>

\*'Other Dismissals' mainly include foreclosure cases dismissed under a general dismissal code (with or without prejudice) in which, barring case-specific analysis, precise reason(s) for dismissal are not immediately apparent.

\*\*Includes, among other disposition type reasons, cases closed with a disposition type code of "miscellaneous" or cases missing a disposition type identifier.

<sup>2</sup> While many foreclosure cases terminated by decree or order were as the result of the final ratification of an auditor's report, other reasons (such as an order of dismissal) were found for this disposition type identifier.

- Following a decrease in the statewide overall average times to disposition among foreclosure cases within each disposition type category between Fiscal Years 2012 and 2013, there were slight to moderate increases in this measure in four of the six categories in FY 2014 over FY 2013 (decree/order, lack of prosecution or service dismissals, stipulations/settlements, and administrative closures). Between Fiscal Years 2014 and 2015, overall average case times increased within all but the dismissed for lack of prosecution or service disposition type grouping. Consistent with recent fiscal years, cases generally took the longest to close on average when dismissed for lack of prosecution or service, and the least amount of time when dismissed for other reasons or when closed by stipulation or settlement.

*Table 6: Average Case Processing Time by Disposition Type, Foreclosure Cases, Fiscal Years 2011 through 2015*

Disposition Type	FY 2011			FY 2012			FY 2013			FY 2014			FY 2015		
	Overall	WST	OST	Overall	WST	OST	Overall	WST	OST	Overall	WST	OST	Overall	WST	OST
Decree/Order	333	288	720	399	290	775	319	281	755	331	296	713	356	313	698
Dismissed—Lack of Prosecution or Service	570	460	968	617	460	888	485	405	729	622	426	892	502	439	765
Other Dismissals	318	262	693	400	245	801	259	215	827	246	210	761	270	241	696
Stipulation/Settlement	276	255	709	271	200	716	203	188	654	215	201	677	302	287	644
Administrative Close	316	302	707	665	323	1,235	314	266	776	389	304	682	455	362	689
Other Dispositions	373	310	683	472	314	777	384	313	740	373	309	671	447	354	746
<b>All Disposition Types</b>	<b>357</b>	<b>299</b>	<b>758</b>	<b>439</b>	<b>299</b>	<b>821</b>	<b>315</b>	<b>269</b>	<b>763</b>	<b>330</b>	<b>280</b>	<b>758</b>	<b>352</b>	<b>305</b>	<b>706</b>

*Table 7. Percentage of Cases Closed Within the Time Standard: All Civil Cases, Non-Foreclosure Cases (Non-FC), and Foreclosure Cases (FC), Fiscal Years 2011-2015*

	FY 2011		FY 2012		FY 2013			FY 2014			FY 2015			FY 14-15 Change	
Jurisdiction Size	Non-FC	FC	Non-FC	FC	All Civil Cases	Non-FC	FC	All Civil Cases	Non-FC	FC	All Civil Cases	Non-FC	FC	Non-FC	FC
<b>Caroline</b>	93%	84%	89%	66%	85%	92%	80%	86%	84%	86%	93%	94%	92%	10%	6%
<b>Dorchester</b>	99%	97%	99%	81%	98%	98%	98%	98%	99%	98%	99%	100%	98%	1%	0%
<b>Garrett</b>	90%	92%	90%	80%	89%	90%	89%	91%	93%	90%	87%	95%	82%	2%	-8%
<b>Kent</b>	98%	85%	100%	73%	91%	93%	90%	81%	88%	77%	76%	93%	68%	5%	-9%
<b>Queen Anne's</b>	99%	97%	99%	94%	99%	99%	100%	97%	99%	96%	96%	100%	93%	1%	-3%
<b>Somerset</b>	100%	92%	99%	98%	98%	99%	97%	97%	100%	95%	97%	98%	97%	-2%	2%
<b>Talbot</b>	91%	90%	92%	88%	92%	90%	96%	88%	88%	88%	85%	89%	82%	1%	-6%
<b>Small, Overall</b>	<b>96%</b>	<b>92%</b>	<b>96%</b>	<b>82%</b>	<b>95%</b>	<b>95%</b>	<b>93%</b>	<b>93%</b>	<b>94%</b>	<b>91%</b>	<b>92%</b>	<b>96%</b>	<b>90%</b>	<b>2%</b>	<b>-1%</b>
<b>Allegany</b>	97%	98%	97%	92%	97%	96%	98%	97%	98%	94%	96%	98%	93%	0%	-1%
<b>Calvert</b>	91%	82%	90%	64%	91%	93%	88%	89%	90%	88%	89%	90%	89%	0%	1%
<b>Cecil</b>	91%	88%	91%	78%	88%	90%	84%	83%	88%	78%	82%	89%	77%	1%	-1%
<b>St. Mary's</b>	93%	88%	94%	65%	89%	92%	86%	87%	92%	84%	87%	96%	83%	4%	-1%
<b>Wicomico</b>	99%	99%	99%	96%	97%	97%	98%	97%	96%	97%	99%	100%	98%	4%	1%
<b>Worcester</b>	98%	98%	95%	93%	98%	100%	96%	97%	98%	97%	98%	98%	98%	0%	1%
<b>Medium, Overall</b>	<b>95%</b>	<b>91%</b>	<b>94%</b>	<b>79%</b>	<b>93%</b>	<b>95%</b>	<b>92%</b>	<b>92%</b>	<b>94%</b>	<b>90%</b>	<b>92%</b>	<b>95%</b>	<b>90%</b>	<b>1%</b>	<b>0%</b>
<b>Carroll</b>	95%	87%	95%	69%	88%	89%	85%	89%	93%	86%	83%	93%	76%	0%	-10%
<b>Charles</b>	90%	85%	90%	73%	87%	90%	84%	88%	87%	89%	84%	92%	80%	5%	-9%
<b>Frederick</b>	96%	92%	98%	87%	95%	95%	96%	95%	97%	94%	95%	97%	94%	0%	0%
<b>Harford</b>	90%	82%	87%	64%	90%	89%	91%	86%	90%	83%	86%	88%	85%	-2%	2%
<b>Howard</b>	97%	77%	96%	81%	98%	99%	94%	95%	99%	88%	96%	100%	90%	1%	2%
<b>Washington</b>	96%	92%	97%	84%	94%	96%	92%	94%	96%	93%	90%	94%	87%	-2%	-6%
<b>Medium-Large, Overall</b>	<b>94%</b>	<b>86%</b>	<b>94%</b>	<b>76%</b>	<b>92%</b>	<b>93%</b>	<b>90%</b>	<b>91%</b>	<b>94%</b>	<b>89%</b>	<b>89%</b>	<b>95%</b>	<b>85%</b>	<b>1%</b>	<b>-4%</b>
<b>Anne Arundel</b>	98%	84%	98%	67%	97%	97%	98%	94%	94%	94%	-	-	-	-	-
<b>Baltimore City</b>	95%	91%	96%	80%	93%	97%	88%	90%	90%	90%	96%	98%	94%	8%	4%
<b>Baltimore County</b>	89%	81%	77%	39%	87%	85%	90%	77%	79%	74%	91%	90%	92%	11%	18%
<b>Montgomery</b>	98%	89%	98%	85%	96%	98%	90%	97%	99%	92%	96%	98%	93%	-1%	1%
<b>Prince George's</b>	85%	67%	87%	47%	85%	93%	77%	87%	90%	85%	85%	93%	80%	3%	-5%
<b>Large, Overall</b>	<b>93%</b>	<b>82%</b>	<b>91%</b>	<b>64%</b>	<b>92%</b>	<b>94%</b>	<b>88%</b>	<b>89%</b>	<b>91%</b>	<b>88%</b>	<b>92%</b>	<b>95%</b>	<b>89%</b>	<b>4%</b>	<b>1%</b>
<b>Statewide</b>	<b>94%</b>	<b>87%</b>	<b>94%</b>	<b>73%</b>	<b>93%</b>	<b>94%</b>	<b>91%</b>	<b>91%</b>	<b>93%</b>	<b>89%</b>	<b>91%</b>	<b>95%</b>	<b>88%</b>	<b>2%</b>	<b>-1%</b>

Table 8. Average Case Processing Time: All Civil Cases, Non-Foreclosure Cases (Non-FC), and Foreclosure Cases (FC), Fiscal Years 2011 to 2015

Jurisdiction Size	FY 2011		FY 2012		FY 2013			FY 2014			FY 2015			FY 14-15 Change	
	Non-FC	FC	Non-FC	FC	All Civil Cases	Non-FC	FC	All Civil Cases	Non-FC	FC	All Civil Cases	Non-FC	FC	Non-FC	FC
<b>Caroline</b>	350	365	256	414	314	246	361	367	339	377	315	216	343	-123	-34
<b>Dorchester</b>	139	282	162	503	216	162	280	210	124	251	232	164	256	40	5
<b>Garrett</b>	376	333	255	355	255	218	309	265	220	307	305	204	364	-16	57
<b>Kent</b>	186	318	154	361	241	207	271	351	266	403	347	198	419	-68	16
<b>Queen Anne's</b>	122	273	155	241	189	162	231	223	145	286	251	147	319	2	33
<b>Somerset</b>	111	285	108	199	172	138	213	191	89	251	188	131	224	42	-27
<b>Talbot</b>	235	322	218	330	222	214	241	268	226	306	324	225	395	-1	89
<b>Small, Overall</b>	<b>190</b>	<b>305</b>	<b>179</b>	<b>361</b>	<b>223</b>	<b>184</b>	<b>272</b>	<b>258</b>	<b>185</b>	<b>304</b>	<b>273</b>	<b>177</b>	<b>322</b>	<b>-8</b>	<b>18</b>
<b>Allegany</b>	206	281	206	284	211	204	230	218	192	267	221	168	300	-24	33
<b>Calvert</b>	246	401	276	515	271	228	324	334	332	335	332	276	364	-56	29
<b>Cecil</b>	228	328	236	427	280	238	358	324	249	400	366	263	435	14	35
<b>St. Mary's</b>	227	366	214	493	298	241	379	312	222	375	339	233	391	11	16
<b>Wicomico</b>	174	253	183	251	221	175	276	243	197	272	250	186	285	-11	13
<b>Worcester</b>	190	276	210	300	223	180	265	244	188	274	251	196	281	8	7
<b>Medium, Overall</b>	<b>210</b>	<b>321</b>	<b>220</b>	<b>394</b>	<b>250</b>	<b>212</b>	<b>306</b>	<b>279</b>	<b>228</b>	<b>321</b>	<b>293</b>	<b>216</b>	<b>345</b>	<b>-12</b>	<b>24</b>
<b>Carroll</b>	205	383	217	430	281	247	344	313	241	367	363	258	437	17	70
<b>Charles</b>	275	402	275	442	345	305	396	327	294	346	367	276	409	-18	63
<b>Frederick</b>	206	326	192	334	258	237	284	259	208	289	280	224	316	16	27
<b>Harford</b>	352	350	259	474	280	265	304	329	257	378	319	267	354	10	-24
<b>Howard</b>	208	569	184	454	213	171	343	231	159	364	239	142	394	-17	30
<b>Washington</b>	215	342	205	348	260	218	307	267	194	314	319	244	361	50	47
<b>Medium-Large, Overall</b>	<b>244</b>	<b>395</b>	<b>222</b>	<b>417</b>	<b>273</b>	<b>237</b>	<b>328</b>	<b>288</b>	<b>219</b>	<b>341</b>	<b>315</b>	<b>226</b>	<b>378</b>	<b>7</b>	<b>37</b>
<b>Anne Arundel</b>	237	380	228	454	274	255	299	281	249	306	-	-	-	-	-
<b>Baltimore City</b>	255	339	230	374	276	238	311	308	275	332	293	228	332	-47	0
<b>Baltimore County</b>	264	391	383	825	303	291	334	436	363	525	322	282	368	-81	-157
<b>Montgomery</b>	159	359	158	394	214	171	333	213	161	303	242	175	326	14	23
<b>Prince George's</b>	323	438	316	529	359	298	423	331	306	351	370	286	424	-20	73
<b>Large, Overall</b>	<b>248</b>	<b>381</b>	<b>262</b>	<b>515</b>	<b>285</b>	<b>246</b>	<b>344</b>	<b>311</b>	<b>264</b>	<b>357</b>	<b>308</b>	<b>240</b>	<b>366</b>	<b>-24</b>	<b>9</b>
<b>Statewide</b>	<b>229</b>	<b>357</b>	<b>228</b>	<b>439</b>	<b>260</b>	<b>223</b>	<b>315</b>	<b>284</b>	<b>227</b>	<b>330</b>	<b>298</b>	<b>217</b>	<b>352</b>	<b>-10</b>	<b>22</b>

*Table 9. Average Case Processing Time among Cases Closed Within-Standard: All Civil Cases, Non-Foreclosure Cases (Non-FC), and Foreclosure Cases (FC), Fiscal Years 2011 to 2015*

Jurisdiction Size	FY 2011		FY 2012		FY 2013			FY 2014			FY 2015			FY 14-15 Change	
	Non-FC	FC	Non-FC	FC	All Civil Cases	Non-FC	FC	All Civil Cases	Non-FC	FC	All Civil Cases	Non-FC	FC	Non-FC	FC
<b>Caroline</b>	223	302	204	296	231	208	248	283	236	299	285	175	318	-61	19
<b>Dorchester</b>	131	267	157	245	205	153	267	203	117	244	226	164	250	47	6
<b>Garrett</b>	202	303	190	269	191	149	254	232	191	270	246	181	290	-10	20
<b>Kent</b>	161	258	154	226	184	171	195	242	206	267	255	167	312	-39	45
<b>Queen Anne's</b>	119	258	151	208	181	149	231	208	132	270	233	147	293	15	23
<b>Somerset</b>	107	246	103	183	161	129	201	174	89	227	168	98	213	9	-14
<b>Talbot</b>	191	285	167	274	181	159	226	213	162	259	247	148	324	-14	65
<b>Small, Overall</b>	<b>149</b>	<b>272</b>	<b>156</b>	<b>243</b>	<b>190</b>	<b>155</b>	<b>234</b>	<b>217</b>	<b>149</b>	<b>261</b>	<b>235</b>	<b>149</b>	<b>283</b>	<b>0</b>	<b>22</b>
<b>Allegany</b>	191	273	188	250	196	186	222	203	182	243	203	155	278	-27	35
<b>Calvert</b>	197	320	217	368	230	190	280	250	200	282	277	225	307	25	25
<b>Cecil</b>	187	277	189	330	217	180	291	246	179	322	289	210	351	31	29
<b>St. Mary's</b>	189	314	178	359	245	201	312	255	174	317	281	211	322	37	5
<b>Wicomico</b>	167	248	177	228	210	161	268	226	178	257	245	186	278	8	21
<b>Worcester</b>	180	265	185	258	211	178	246	228	170	260	243	186	274	16	14
<b>Medium, Overall</b>	<b>185</b>	<b>282</b>	<b>188</b>	<b>299</b>	<b>218</b>	<b>183</b>	<b>270</b>	<b>234</b>	<b>181</b>	<b>279</b>	<b>255</b>	<b>191</b>	<b>300</b>	<b>10</b>	<b>21</b>
<b>Carroll</b>	177	328	186	301	222	188	287	263	204	312	287	211	353	7	41
<b>Charles</b>	225	343	226	321	280	251	318	271	229	293	296	235	327	6	34
<b>Frederick</b>	183	282	184	260	237	210	269	237	193	265	258	205	292	12	27
<b>Harford</b>	176	285	183	309	222	201	254	248	191	291	250	188	293	-3	2
<b>Howard</b>	183	381	162	388	203	167	322	210	153	325	220	140	362	-13	37
<b>Washington</b>	186	311	184	278	234	200	274	240	173	285	275	215	312	42	27
<b>Medium-Large, Overall</b>	<b>188</b>	<b>320</b>	<b>187</b>	<b>311</b>	<b>232</b>	<b>200</b>	<b>284</b>	<b>244</b>	<b>186</b>	<b>292</b>	<b>263</b>	<b>192</b>	<b>320</b>	<b>6</b>	<b>28</b>
<b>Anne Arundel</b>	228	314	220	313	260	239	289	254	215	284	-	-	-	-	-
<b>Baltimore City</b>	230	299	213	285	238	225	252	261	224	287	277	219	312	-5	25
<b>Baltimore County</b>	196	296	179	303	215	193	268	232	182	296	257	193	329	11	33
<b>Montgomery</b>	151	323	147	340	189	156	288	196	159	267	224	167	299	8	32
<b>Prince George's</b>	256	335	257	302	277	257	302	276	256	292	309	256	349	0	57
<b>Large, Overall</b>	<b>211</b>	<b>312</b>	<b>203</b>	<b>310</b>	<b>236</b>	<b>209</b>	<b>280</b>	<b>244</b>	<b>202</b>	<b>286</b>	<b>266</b>	<b>204</b>	<b>323</b>	<b>2</b>	<b>37</b>
<b>Statewide</b>	<b>188</b>	<b>299</b>	<b>188</b>	<b>299</b>	<b>221</b>	<b>189</b>	<b>269</b>	<b>235</b>	<b>181</b>	<b>280</b>	<b>255</b>	<b>186</b>	<b>305</b>	<b>5</b>	<b>25</b>

*Table 10. Average Case Processing Time among Cases Closed Over-Standard: All Civil Cases, Non-Foreclosure Cases (Non-FC), and Foreclosure Cases (FC), Fiscal Years 2011 to 2015*

Jurisdiction Size	FY 2011		FY 2012		FY 2013			FY 2014			FY 2015			FY 14-15 Change	
	Non-FC	FC	Non-FC	FC	All Civil Cases	Non-FC	FC	All Civil Cases	Non-FC	FC	All Civil Cases	Non-FC	FC	Non-FC	FC
<b>Caroline</b>	2,166	699	668	644	793	697	820	868	867	868	684	867	645	0	-223
<b>Dorchester</b>	680	756	556	1,630	805	675	934	648	656	645	587	-	587	-	-58
<b>Garrett</b>	1,928	656	870	688	797	828	754	627	616	633	705	675	709	59	76
<b>Kent</b>	1,186	663	--	718	851	719	925	822	715	855	641	631	642	-84	-213
<b>Queen Anne's</b>	629	716	672	726	1,209	1,209	--	732	1,068	647	647	-	647	-	0
<b>Somerset</b>	901	749	764	855	836	1,367	658	666	-	666	963	1,450	670	-	4
<b>Talbot</b>	665	649	781	732	684	693	634	670	695	648	761	845	723	150	75
<b>Small, Overall</b>	<b>1,291</b>	<b>694</b>	<b>757</b>	<b>908</b>	<b>794</b>	<b>772</b>	<b>814</b>	<b>760</b>	<b>759</b>	<b>761</b>	<b>699</b>	<b>856</b>	<b>668</b>	<b>97</b>	<b>-93</b>
<b>Allegany</b>	717	629	732	666	655	673	579	702	819	643	627	694	593	-125	-50
<b>Calvert</b>	772	761	794	775	681	713	656	988	1,553	706	794	720	835	-833	129
<b>Cecil</b>	662	686	715	769	745	761	727	703	758	674	711	694	716	-64	42
<b>St. Mary's</b>	732	746	787	741	749	703	785	692	743	673	724	732	723	-11	50
<b>Wicomico</b>	625	593	691	784	625	613	643	780	703	848	616	-	616	-	-232
<b>Worcester</b>	651	726	720	828	747	834	738	740	951	663	621	648	605	-303	-58
<b>Medium, Overall</b>	<b>705</b>	<b>729</b>	<b>748</b>	<b>763</b>	<b>716</b>	<b>714</b>	<b>717</b>	<b>772</b>	<b>948</b>	<b>686</b>	<b>719</b>	<b>704</b>	<b>723</b>	<b>-244</b>	<b>37</b>
<b>Carroll</b>	731	759	807	713	706	733	670	729	779	711	727	872	696	93	-15
<b>Charles</b>	753	725	733	766	799	777	817	751	733	762	748	754	746	21	-16
<b>Frederick</b>	746	838	643	825	689	726	632	661	674	657	725	829	690	155	33
<b>Harford</b>	1,864	653	762	766	791	775	823	823	864	806	748	837	701	-27	-105
<b>Howard</b>	910	1,191	764	729	692	715	681	653	603	663	683	654	684	51	21
<b>Washington</b>	830	683	806	709	694	701	6930	708	758	691	702	735	694	-23	3
<b>Medium-Large, Overall</b>	<b>1,091</b>	<b>846</b>	<b>759</b>	<b>752</b>	<b>745</b>	<b>751</b>	<b>739</b>	<b>744</b>	<b>768</b>	<b>734</b>	<b>730</b>	<b>812</b>	<b>708</b>	<b>44</b>	<b>-26</b>
<b>Anne Arundel</b>	709	718	656	739	788	771	822	728	799	670	-	-	-	-	-
<b>Baltimore City</b>	744	730	689	723	738	742	737	744	748	742	660	635	666	-113	-76
<b>Baltimore County</b>	823	794	1,058	1,161	875	854	956	1,115	1,061	1,165	959	1,079	791	18	-374
<b>Montgomery</b>	605	674	672	708	782	844	744	694	598	706	676	616	696	18	-10
<b>Prince George's</b>	714	648	717	727	825	838	821	715	752	695	722	698	727	-54	32
<b>Large, Overall</b>	<b>746</b>	<b>704</b>	<b>888</b>	<b>872</b>	<b>816</b>	<b>833</b>	<b>803</b>	<b>877</b>	<b>897</b>	<b>863</b>	<b>771</b>	<b>883</b>	<b>724</b>	<b>-14</b>	<b>-139</b>
<b>Statewide</b>	<b>906</b>	<b>758</b>	<b>805</b>	<b>821</b>	<b>763</b>	<b>763</b>	<b>763</b>	<b>791</b>	<b>857</b>	<b>758</b>	<b>728</b>	<b>804</b>	<b>706</b>	<b>-53</b>	<b>-52</b>